



MULTICOLOR STONEFACE® COATING

- An easy-to-apply decorative coating that creates a granular pattern on cementitious masonry, wood, glass, plastic and metal.

Multicolor Stoneface® Coating Solutions from Cathay Coating

Multicolor Stoneface® technology, unlike standard homogeneous coatings, contains different coloured liquid beads dispersed within a resin matrix which yields a multicolour pattern using a spray application technique.

The Multicolor Stoneface® range creates a granular pattern without the addition of aggregate, filler, or minerals, which emulates natural stone textures such as granite and marble, providing an easy to apply, cost effective alternative to popular building facade finishing materials.

Multicolor Stoneface® coating is suitable for all types of interior and exterior building facade, including cementitious masonry, wood, glass, plastic and metal. It is also suitable for re-coating on ceramic tile, granite/marble or previously painted surfaces.

Benefits



UV Resistant, suitable for interior and exterior application



Long term water resistance to protect against ingress



Low viscosity formulation ensures quick cure times and low material consumption



Freeze-thaw resistant



Excellent adhesion for longer lifecycles



Easy to apply and suitable for renovation projects



Excellent low/high temperature resistance, suitable for all climates



Easy to clean and maintain, providing a long-lasting finish



Low VOC and odour, environmentally friendly

Application Suitability

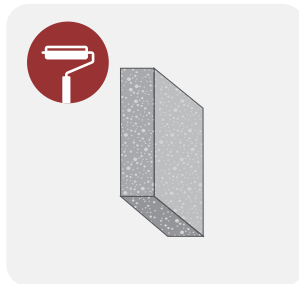


Exterior

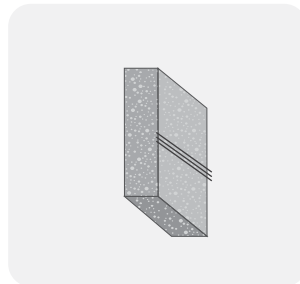


Interior

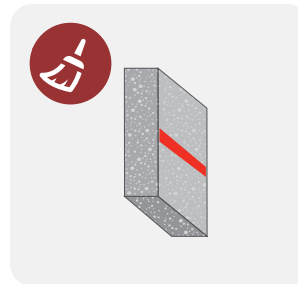
Application



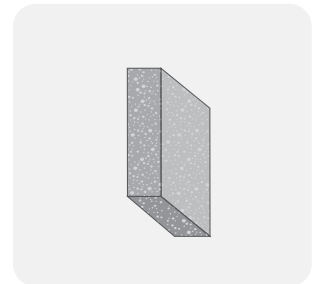
1. Apply an Adhesion Primer



2. Locate the Groove Line



3. Paint the Groove Line



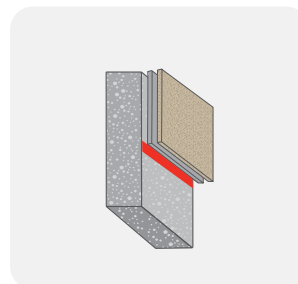
4. Masking Tape over the Groove Line



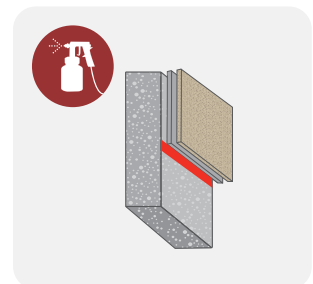
5. Apply a Textured Undercoat



6. Apply Multicolor Stoneface®



7. Remove the Masking Tape



8. Apply a Clear Top Coat

Why Choose Multicolor Stoneface®?

Multicoloured Architectural Surface Coating

An economical and quick to apply decorative coating system that provides a granular pattern for architectural surfaces. Available in a wide range of colours and textures.

Spray Application

Consistent multicoloured pattern produced instantaneously by a simple-spray application with all-colours-in-one-component formulation. Low material consumption, quick dry times and easy maintenance.

Interior/Exterior and Refurbishments

Combines inorganic pigments and a high performance polymer formulation to achieve a high quality, weather resistant, colour stable surface coating.

Environmentally Friendly Option for Green Buildings

A non-toxic, low VOC and lightweight alternative to traditional granite cladding options.

Granite Tones – MCA Series



MCA-6001 Polychrome



MCA-6002 Rosa Kali



MCA-6003 Pink Porrino



MCA-6004 Eagle Red



MCA-6005 Giallo Antico



MCA-6006 Beola



MCA-6007 Yello Granie



MCA-6008 Rosa Porrino



MCA-6009 Champion Rosa



MCA-6010 Tan Brown



MCA-6011 Carmen Red



MCA-6012 Autumn Brown



MCA-6013 Samba White



MCA-6014 Grigio Sardo



MCA-6015 Grigio Perla



MCA-6016 Giallo Cecilia



MCA-6017 Travertino



MCA-6018 Amarello Real



MCA-6019 Verde Lavras



MCA-6020 Giallo SF Real



MCA-6021 Aveiro



MCA-6022 Rosso Toledo



MCA-6023 Balmoral Red



MCA-6024 Camel Brown



MCA-6025 Blanco White



MCA-6026 S.F Real Light



MCA-6027 Caledonia



MCA-6028 Baltic Brown

Granite Tones – MCA Series



MCA-8050



MCA-8051



MCA-8052



MCA-8053



MCA-8054



MCA-8055



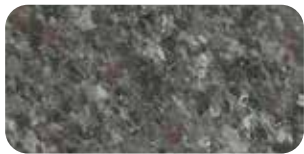
MCA-8056



MCA-8057



MCA-8058



MCA-8059



MCA-8060



MCA-8061



MCA-8062



MCA-8063



MCA-8064



MCA-8065



MCA-8066



MCA-8067



MCA-8068



MCA-8069



MCA-8070



MCA-8071



MCA-8072



MCA-8073



MCA-8074



Multicolor Tones – MCK Series



MCK-3045



MCK-3046



MCK-3047



MCK-3048



MCK-3050



MCK-3051



MCK-3052



MCK-3053



MCK-3054



MCK-3055



MCK-3056



MCK-3057



MCK-3058



MCK-3059



MCK-3060



MCK-3061



MCK-3062



MCK-3063



MCK-3064



MCK-3065



MCK-3066



MCK-3067



MCK-3068



MCK-3069



MCK-3070



MCK-3071



MCK-3072



MCK-3073



MCK-3074



MCK-3075



www.flowcreteasia.com



asia@flowcrete.com

*Whilst every care has been taken to ensure that the information included in this document was accurate at the time of printing, Tremco Construction Products Group APAC reserves the right to change product specifications at any time without prior notice. The photographs and colours reproduced in this publication are within the constraints of the printing process and are not to be used for matching purposes. All photographs are used for approximate representation only and may not show the actual products on offer. E&OE.

APAC030521

