

# MULTICOLOR STONEFACE® MCA/MCK SERIES

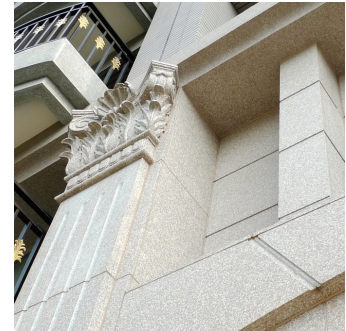
## High UV Resistant, Multicoloured Surface Coating

### PRODUCT DESCRIPTION

MULTICOLOR STONEFACE technology contains different coloured liquid beads dispersed within a resin matrix which yields a multicolour pattern using a spray application technique.

### USES

The Multicolor Stoneface range creates a granular pattern without the addition of aggregate, filler, or minerals, which emulates natural stone textures such as granite and marble, providing an easy to apply, cost effective alternative to popular building façade finishing materials.



### PROPERTIES

- Multi-coloured shades formed by a spray application which achieves a consistent patterned finish.
- Unlimited colours/pattern choices. Colour matching services available to customise any desired granite/marble/mosaic/vinyl etc. patterns.
- 100% resin content by fluorocarbon-modified silicone used in order to achieve the highest performance in UV stability and resistance to weathering degradation.
- Waterproof undercoat acts as a waterproofing and crack bridging layer.
- Hydrophobic surface formulation provides superior stain and pollution resistance. Anti-algae/fungus.
- Applicable on all types of new and old concrete, wood, metal, gypsum, plastic, glass, ceramic, calcium silicate/fiber board, tile, masonry substrates, and existing paint works (with appropriate system primer).
- Versatile system design, from 300micron flat finish to 2mm textured finish. Re-coatable.
- Odourless, low VOC, non-toxic. Green building credentials.
- Fast and economic application by air spray. Light weight and low material consumption.
- Low maintenance. Suitable for new and refurbishment projects.

### TECHNICAL DATA & PHYSICAL PROPERTIES

TEST ITEM	METHOD	RESULT
Appearance in Can	JIS K5600-1-1	Different coloured liquid capsules evenly distributed in a resinous medium, free from clogs and agglomeration
Main Composition	Material Analysis	Silicone modified acrylic, fluorocarbon
Specific Gravity		1.05±0.1
Adhesion (kgf/cm <sup>2</sup> )	JIS A6909	9.2
Water Permeability (ml)	JIS A6909	0.4
Water Vapor Transmission (g/m <sup>2</sup> /h)	ASTM E96-00e1	2.24
Humidity Resistance	ASTM D2247-02	No visible damage
Resistance to Boiling Water	JIS K5400	No visible damage
Impact Resistance	JIS K5600	No cracking and peeling

Scrub Resistance	ASTM D2486-00 (5000 times)	Substrate not visible
Tensile Strength	ASTM D412-98a	9kgf/cm <sup>2</sup>
Elongation	ASTM D412-98a	133%
Flexibility	ASTM D522-93a	No cracking and peeling
Stain Resistance	ASTM D1308-02el	No changes
Chemical Resistance	JIS K5600-6-1	No visible damage
Humidity and cool-heat cycling	JIS K5600-7-4	No visible damage
Cool Resistance	-30°C, 24 hr	No cracking and peeling
Weather Resistance	ASTM G154-06 (2000hr)	No visible damage
Toxicity Content	RoHS Directive 2002/95/EC	Non-detected

## APPLICATION METHOD & PRODUCT SELECTION

### 1. Surface Preparation & Primer

#### Concrete & Mineral Substrate:

Ensure concrete mechanical strength at 3000 PSI and above, age for 21 days, fine plastered to level, free from voids, cracks, dust, laitance, undulations. Cracks and voids should be properly rectified prior to application. Apply AK-28 system primer.

#### High Density and Non-rusting Metal Substrate:

Remove surface wax, release agent and other contaminants and treat with AK-63 or EP-18A/B system primer.

#### Wooden Substrate:

Treat with SP-17 wood primer.

#### Re-coating on Ceramic Tile Surface:

Apply high strength AK-70 mortar to level tile surface followed by AK-28 system primer.

#### Re-coating on Existing Painted Surface:

Remove all loose paint and apply AK-28 system primer.

### 2. Groove line Design

- 2.1 Groove line may be installed to simulate granite joint design.
- 2.2 Mark out groove line location in accordance to joint plan using ink or other marking method.
- 2.3 Apply grooveline paint SP-25 (in custom color) along the joint at specified joint width. Allow 4 hours to dry.
- 2.4 Adhere masking tape alongside the grooveline.
- 2.5 Remove masking tape after application of MULTICOLOR STONEFACE®.
- 2.6 Proceed with final clear top coat application to seal.

### 3. Base Coat & Body Design (see relevant data sheet for application instructions)

DESIGN/FUNCTIONAL REQUIREMENT	PRODUCT SELECTION	DESCRIPTION	COVERAGE	TOOL
Smooth Surface Design (recommended for smooth substrate and panelling only). For total system thickness at 300 micron.	<b>SP-21</b>	Water Based Co-loured Acrylic Emulsion	0.3-0.4kg/m <sup>2</sup>	Spray/brush/roller
Textured Surface Design (to emulate burned granite texture). For total system thickness at 1.5mm.	<b>AK-201</b>	Water Based White Textured Body Coat	1.5kg/m <sup>2</sup>	Spray by Hopper Gun
Waterproof Crack-Bridging Design. For total system thickness at 1mm.	<b>AK-133</b>	Water Based Coloured Elastomeric Body Coat	1.2kg/m <sup>2</sup>	Spray/roller

### 4. MULTICOLOR STONEFACE® Pattern Coat



Please refer to the product brochure for colour selection. Contact your local representative for a special colour match.

MULTICOLOR STONEFACE® Series	Pattern Type	Practical Coverage	Application Tool
MCA Series (MCA 2052~)	Granite Tone	0.4~0.6kg/m <sup>2</sup>	Standard SG-15 System
MCK Series (MCK 3045 ~)	Mosaic Tone	0.3~0.4kg/m <sup>2</sup>	Standard SG-16 System

**5. Apply Protective Clear Top Coat (see relevant data sheet for application instructions)**

Product Selection:

<b>AC-15G A/B</b>	Two-component PU acrylic solvent based top coat - high gloss
<b>AC-15M A/B</b>	Two-component PU acrylic solvent based top coat - matt
<b>SC-16G</b>	One-component water based born silicone acrylic based top coat - medium gloss
<b>SC-16M</b>	One-component water based born silicone acrylic based top coat - matt
<b>SC-17G</b>	One-component water based born silicone acrylic based top coat - mica texture
<b>TF-16G</b>	One-component water based born fluorocarbon based top coat - medium gloss
<b>TF-16M</b>	One-component water based born fluorocarbon based top coat - matt

**PERSONNEL REQUIREMENT**

The product is for industrial use only to be handled by trained professionals only.

**PACKING**

18KG/drum

**SHELF LIFE**

12 months in original sealed container stored in a well ventilated area away from direct sunlight, flame sources and children’s reach. Relative humidity below 85%, temperature 10-28°C.

**SAFETY CAUTION**

- Solvent type system products contain volatile organic solvent. Ensure proper ventilation measures during application. Avoid all sources of ignition. Equip application personnel with carbon mask and gloves.
- Stop using the material immediately upon any skin irritation or physical discomfort. Seek appropriate medical care promptly.
- Shake the container gently prior to opening. Stirring by mechanical means is prohibited. Keep the container sealed at all time. Avoid direct sunlight exposure.
- Application tools may be cleaned with water followed by toluene.
- Store in cool, dry, ventilated indoor area, keep away from children’s reach.
- Flammable before cured, keep away from all sources of ignition.
- Refer to the Material Safety Data Sheet and Technical Data for quality standards.
- Mixture with material other than specified herewith is prohibited.

**DISCLAIMER:** Any suggested practices or installation specifications for the composite floor or wall system (as opposed to individual product performance specifications) included in this communication (or any other) from Flowcrete Asia Sdn Bhd constitute potential options only and do not constitute nor replace professional advice in such regard. Flowcrete Asia Sdn Bhd recommends any customer seek independent advice from a qualified consultant prior to reaching any decision on design, installation or otherwise. Information contained in this data sheet is based upon current knowledge and experience and must be considered as general guidance and subject to consideration in each individual case.