



## FLOWFLAKE

- ▶ Decorative, flaked floor coating systems that introduce texture and vibrancy into commercial environments.

# Flowflake Range Technical Profile

---



**A first-rate visitor experience means ensuring that the environment constantly delivers on both aesthetics and functionality.**

The Flowflake range provides commercial sites with a solution that delivers attractive floors robust enough to withstand heavy foot traffic, frequent cleaning and continuous use.

Decorative flakes are incorporated within the resin floor finish to create an eye-catching and vibrant interior space. Available in a wide variety of colours and styles these floors represent a multitude of versatile design options to create beautiful and bespoke surfaces.

Many different types of locations, including shops, showrooms, restaurants and airports, have embraced the look of Flowcrete's Flowflake range and installed floors that reflect a high-end image whilst meeting the requirements of the site's everyday activities.

---

## Application Suitability



Retail



Education



Offices



Leisure



Healthcare



Transport



## Standard Colours



Limestone



Sandstone



Onyx



Carbon



Basalt



Pewter

The applied colours may differ from the examples shown. For a full colour chart and samples, contact your local Flowcrete office.

## Technical Profile

### SLIP RESISTANCE

Method described in BS 7976-2 (typical values for 4-S rubber slider)

Dry >40, Wet depends on spec. (in accordance with HSE and UKSRG guidelines)

### TEMPERATURE RESISTANCE

Tolerant of sustained temperatures up to 60°C

### IMPACT RESISTANCE

ISO6272 (1kg)

>1.8 m

ISO6272 (2kg)

>1.5 m

### WATER PERMEABILITY

Karsten Test

Nil (Impermeable)

### BOND STRENGTH

>1.5 MPa\*

### FIRE RESISTANCE

EN 13501-1

BFL-s1

\*Assumes concrete compressive strength is greater than 25 N/mm<sup>2</sup>

## Flowflake Marble

A decorative coating that introduces texture and vibrancy into commercial and industrial environments.

Flowflake Marble comprises coloured flakes of varying sizes scattered over a pigmented epoxy base coat and finished with tough resistant clear sealers to provide durability.



Attractive with extensive design potential



Hard-wearing and chemical resistant



Seamless, hygienic finish



Can be applied over existing finishes

## Application Suitability

Food & Drink	
Pharmaceutical	
Engineering	
Automotive	
Chemical Processing	
Manufacturing	
Retail Environments	✓
Transport	
Stadia	✓
Education & Offices	✓
Airports	✓
Healthcare	✓

DAY TIME

NIGHT TIME

# Flowflake Glow

An innovative and functional coating that provides a decorative, durable and glow in the dark feature into the floors to enhance safety when in low light conditions.

Flowflake Glow contains varying sizes of self luminous flakes scattered over a pigmented epoxy base coat and finished with a tough resistant clear sealer.



### Attractive:

Offers extensive design potential to deliver the wow-factor underfoot.



### Versatile:

Can be laid over existing hard surfaces such as tiles, marble or terrazzo.



### Seamless:

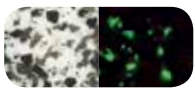
Delivers a hygienic seam-free surface that is easy to clean and maintain.



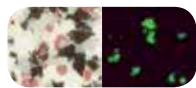
### Luminescent:

Glow in the dark safety features in case of power outages.

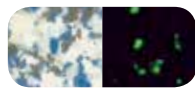
## Standard Colours



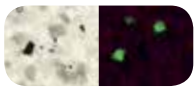
Ash Grey - Glow



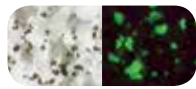
Champagne - Glow



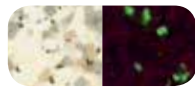
Glacier - Glow



Granite - Glow



Moonlight - Glow



Oyster - Glow

## Technical Profile

### IMPACT RESISTANCE

ISO6272 1kg	>1.8 m
ISO6272 2kg	>1.5 m

### TEMPERATURE RESISTANCE

Tolerant of sustained temperatures up to 60°C

### WATER PERMEABILITY

Karsten Test	Nil (Impermeable)
--------------	-------------------

### SLIP RESISTANCE

Method described in BS 7976-2 (typical values for 4-S rubber slider)	Dry >40, Wet depends on spec. (in accordance with HSE and UKSRG guidelines)
--	---

### FIRE RESISTANCE

EN 13501-1	B <sub>f1</sub> -s1
------------	---------------------

### ABRASION RESISTANCE

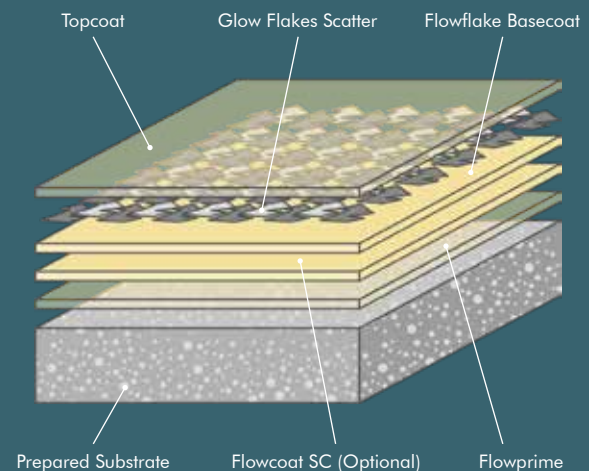
BS8204:Part 2:2002	Class AR2 - Medium duty industrial and commercial
--------------------	---

### BOND STRENGTH

> 1.5 MPa\*

SPEED OF CURE**	10°C	20°C	30°C
Light Traffic	36 hrs	24 hrs	16 hrs
Full Traffic	72 hrs	48 hrs	36 hrs
Full Chemical Cure	12 days	7 days	6 days

\*Assumes concrete compressive strength is greater than 25 N/mm<sup>2</sup>



\*\* Cure times at temperatures between 0-30°C can be achieved by altering the quantity of catalyst used. For applications falling outside of this temperature range, please contact your local Flowcrete Technical Department.

The applied colours may differ from the examples shown. For a full colour chart and samples, contact your local Flowcrete office.

## Technical Profile

### SLIP RESISTANCE

Method described in BS 7976-2 (typical values for 4-S rubber slider)

Dry >40, Wet depends on spec. (in accordance with HSE and UKSRG guidelines)

### TEMPERATURE RESISTANCE

Tolerant of sustained temperatures up to 60°C

### IMPACT RESISTANCE

ISO6272 (1kg)

> 1.8 m

ISO6272 (2kg)

> 1.5 m

### WATER PERMEABILITY

Karsten Test

Nil (Impermeable)

### BOND STRENGTH

> 1.5 MPa\*

### FIRE RESISTANCE

EN 13501-1

B<sub>FL</sub>-s1

\*Assumes concrete compressive strength is greater than 25 N/mm<sup>2</sup>

## Flowflake Terroso

A seamless, decorative, durable floor finish to transform commercial and industrial environments.

Flowflake Terroso contains varying sizes of flakes scattered over a pigmented epoxy base coat and finished with a tough resistant clear sealer.



Attractive with extensive design potential



Hard-wearing and chemical resistant



Seamless, hygienic finish



Can be applied over existing finishes

## Standard Colours



Black Granite



Glacier



Freckle



Frosty



Grey Granite



Moonlite

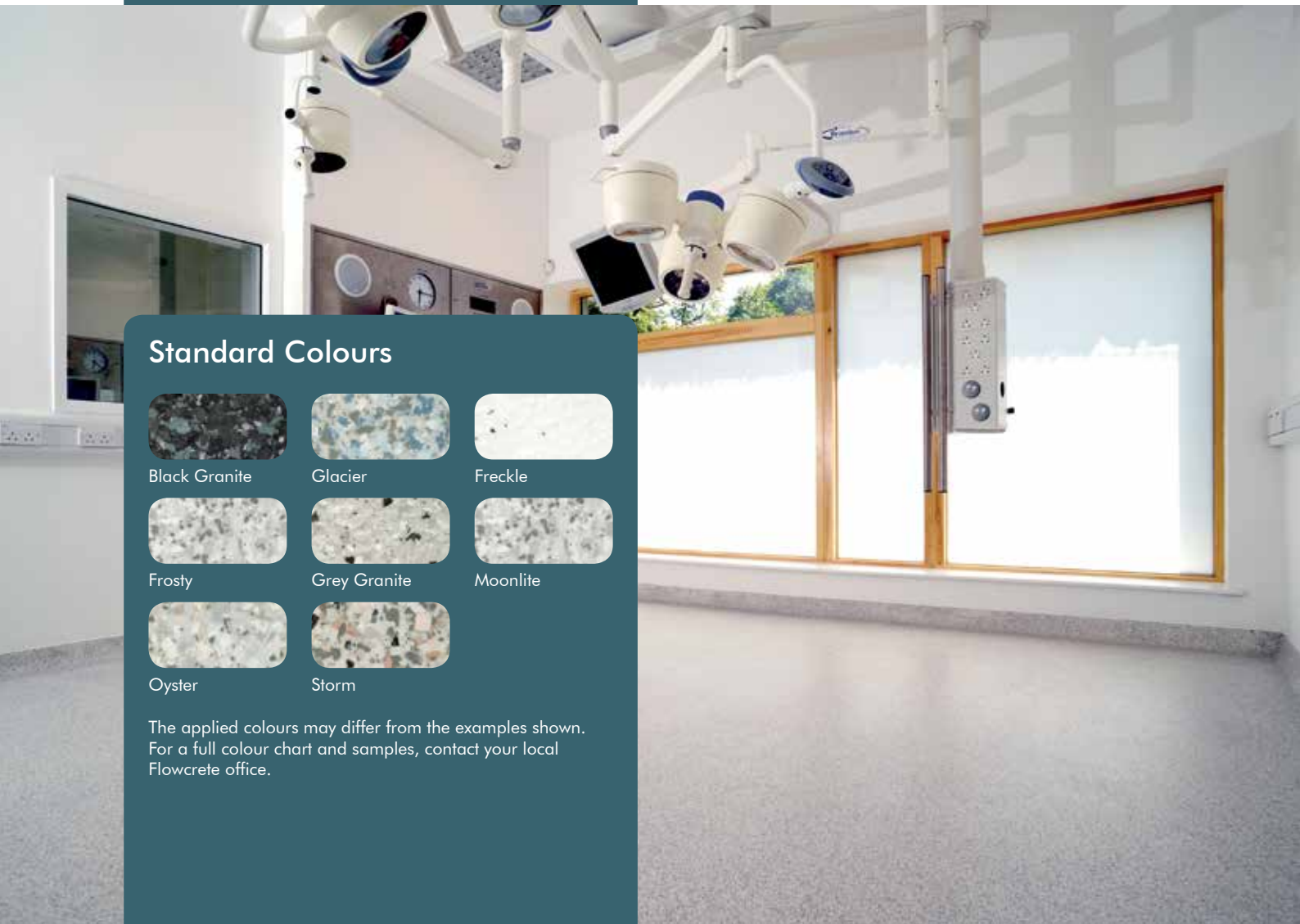


Oyster



Storm

The applied colours may differ from the examples shown. For a full colour chart and samples, contact your local Flowcrete office.



## Standard Colours



Azure Blue



Clementine



Cranberry



Dalmatian



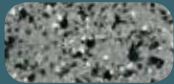
Ebony



Emerald



Gold



Granite



Pacific Blue



Peacock

The applied colours may differ from the examples shown. For a full colour chart and samples, contact your local Flowcrete office.



## Technical Profile

### SLIP RESISTANCE

Method described in BS 7976-2 (typical values for 4-S rubber slider)

Dry >40, Wet depends on spec. (in accordance with HSE and UKSRG guidelines)

### TEMPERATURE RESISTANCE

Tolerant of sustained temperatures up to 60°C

### IMPACT RESISTANCE

ISO6272 (1kg)

>1.8 m

ISO6272 (2kg)

>1.5 m

### WATER PERMEABILITY

Karsten Test

Nil (Impermeable)

### BOND STRENGTH

>1.5 MPa\*

### FIRE RESISTANCE

EN 13501-1

B<sub>FL</sub>-s1

\*Assumes concrete compressive strength is greater than 25 N/mm<sup>2</sup>

## Flowflake Kristalina

A smooth, decorative, sparkling resin floor finish that delivers an attractive solution for any modern contemporary environment.

A smooth, decorative, sparkling resin floor finish that delivers an attractive solution for any modern contemporary environment.



Attractive with extensive design potential



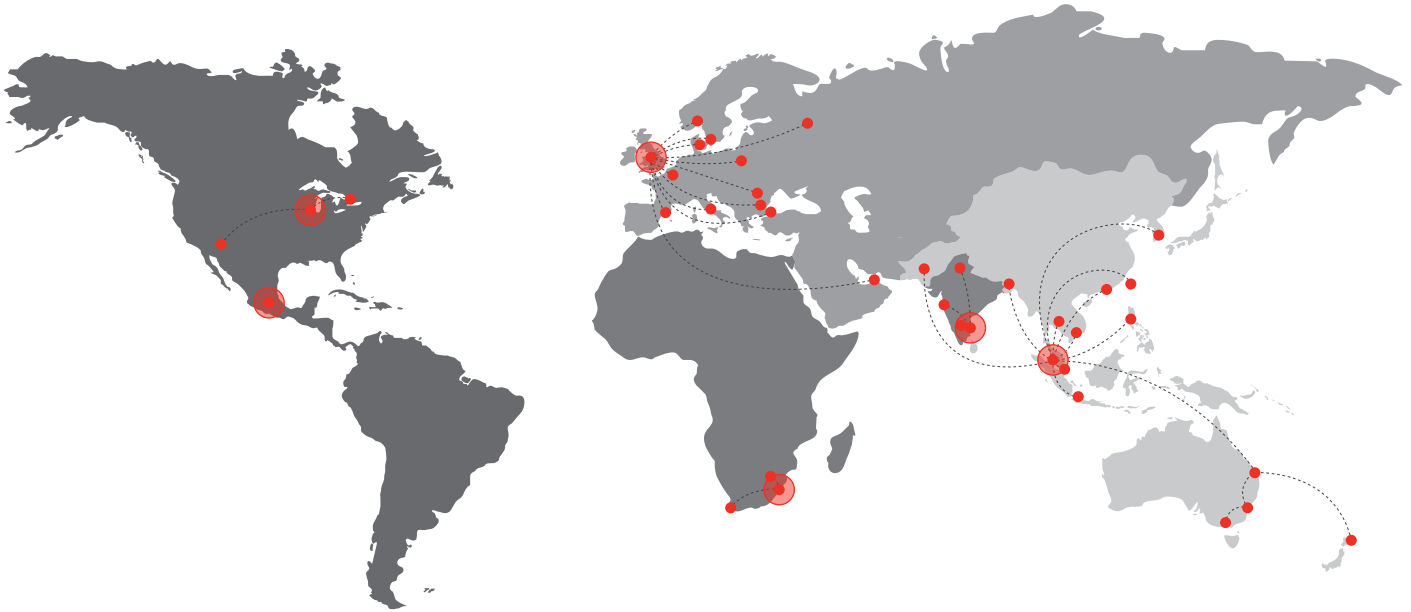
Hard-wearing and chemical resistant



Seamless, hygienic finish



Can be applied over existing finishes



## Flowcrete

World leader in seamless resin flooring solutions and other specialist coatings.

### Africa

South Africa +27 31 701 0017 southafrica@flowcrete.com

### Asia Pacific (APAC)

Australia	+61 7 3205 7115	australia@flowcrete.com
Bangladesh	+603 6277 9575	bangladesh@flowcrete.com
Hong Kong	+852 2795 0478	hongkong@flowcrete.com
Indonesia	+62 21 252 3201	indonesia@flowcrete.com
Korea	+60 3 6277 9575	korea@flowcrete.com
Malaysia	+60 3 6277 9575	asia@flowcrete.com
New Zealand	+64 7 541 1221	newzealand@flowcrete.com
Pakistan	+60 3 6277 9575	pakistan@flowcrete.com
Philippines	+63 2 834 6506	philippines@flowcrete.com
Singapore	+65 6848 7166	singapore@flowcrete.com
Taiwan	+60 3 6277 9575	taiwan@flowcrete.com
Thailand	+66 2539 3424	thailand@flowcrete.com
Vietnam	+84 28 6287 0846	vietnam@flowcrete.com

## Europe & Middle East (EME)

Bulgaria	+359 898 61 58 31	bulgaria@flowcrete.com
Denmark	+46 435 40 01 10	denmark@flowcrete.com
France	+33 1 60 61 74 42	france@flowcrete.com
Italy	+39 339 4853258	italy@flowcrete.com
Norway	+47 6486 0830	norway@flowcrete.com
Poland	+48 22 879 8907	poland@flowcrete.com
Romania	+40 766 596 991	romania@flowcrete.com
Russia	+7 916 931 3513	russia@flowcrete.com
Spain	+34 937 07 0872	spain@flowcrete.com
Sweden	+46 435 40 01 10	sweden@flowcrete.com
Turkey	+90 212 2946570	turkey@flowcrete.com
UAE	+971 4 347 0460	uae@flowcrete.com
UK	+44 (0) 1270 753 000	uk@flowcrete.com

### India

India +91 44 40176600 india@flowcrete.com

## North America

Canada	+1 877-210-2444	canada@flowcrete.com
Mexico	+55 44 40 94 00	mexico@flowcrete.com
USA	+1 513-943-4225	americas@flowcrete.com

\*Whilst every care has been taken to ensure that the information included in this document was accurate at the time of printing, Flowcrete reserves the right to change product specifications at any time without prior notice. The photographs and colours reproduced in this publication are within the constraints of the printing process and are not to be used for matching purposes. All photographs are used for approximate representation only and may not show the actual products on offer. E&OE.