



FLOWFRESH

- ▶ HACCP International certified antimicrobial cementitious polyurethane floor coating systems, ideal for use in areas where hygiene is critical.

Flowfresh Range Technical Profile



Flowfresh represents a new generation of performance antimicrobial flooring based on the use of silver, in partnership with Polygiene®, that kills up to 99.9% of bacteria on contact.

Silver is a natural element known for its ability to purify and protect from bacterial infections – and provides an attractive, environmentally friendly alternative to chemically manufactured antimicrobials.

HACCP International certified as safe for use in food processing environments, Flowfresh offers total protection. A continuous migration of silver ions are delivered to the contact surface from where they attack gram positive and gram negative bacteria and viruses. This technology remains active for the lifetime of the floor, even when damaged or worn unlike coatings or surface treatments.

Flowfresh meets the **ISO 22196** standard of evaluating the antimicrobial activity of antimicrobial treated plastics and other non-porous surfaces.



Application Suitability



Food & Beverage



Meat & Fish



Bakeries & Confectionery



Food Preparation & Kitchens



Hospitals & Healthcare



Pharmaceutical Environments

Resistance Chart

BACTERIAL RESISTANCE			CHEMICAL RESISTANCE*				
SARS-CoV	✓	Salmonella Typhi	✓	Hydrochloric Acid 10%	✓	Methanol	✓
MRSA	✓	Enterococcus Faecalis	✓	Sulphuric Acid 10%	✓	Sugar Syrups	✓
E-coli	✓	Staphylococcus Aureus	✓	Citric Acid 10%	✓	Caustic Soda	✓
Listeria	✓	Streptococcus Pyogenes	✓	Acetic Acid 5%	✓	Petrol	✓
C.difficile	✓	Pseudomonas Aeruginosa	✓	Lactic Acid 10%	✓	Oil Ingredients	✓
Proteus Vulgaris	✓	Campila Bacta	✓	Phosphoric Acid 5%	✓	Detergents	✓

*A chemical resistance chart is available on request.

System Components



	DESCRIPTION	USES
Flowfresh Primer	3-component, polyurethane scratch coat/primer for concrete and cementitious substrates. Flowfresh Primer will bond to surface dry substrates that have a Relative Humidity up to 95% (to BS 8204).	For priming concrete and screeds, prior to overcoating with the Flowfresh flooring system.
Flowfresh Cove	4-component, solvent-free, polyurethane concrete cove for the Flowfresh range of products containing antimicrobial additive, Polygiene®.	Used as footing/moulding compound to form coves for the Flowfresh SL, MF, RT and HF systems.
Flowfresh Sealer	2-component, solvent free, polyurethane coloured coating containing antimicrobial additive, Polygiene®.	Used as a lock coat for Flowfresh SR system.
Flowfresh Coating	3 component, antimicrobial polyurethane coloured coating.	Used for sealing Flowfresh Cove.
Flowseal Ultra	2-component, fast curing, UV light stable, gloss sealer with low odour.	Used as a fast curing UV stable sealer or receiving coat for coloured flakes and coloured quartz broadcast systems.
Flowseal Ultra EWT	2-component, fast curing, UV light stable, polyurea gloss sealer with low odour.	Used as a fast curing UV stable sealer or receiving coat for coloured flakes and coloured quartz broadcast systems. The Flowseal Ultra EWT has extended working time as compared to the Flowseal Ultra.
Flowfresh Coating Satin	Flowfresh Coating Satin is a 4-component, solvent free, coloured polyurethane concrete coating. The product contains Polygiene®, an antimicrobial additive based on silver ion technology.	Flowfresh Coating Satin is normally used as a topcoat for the Flowfresh SR system but if applied in thin coating layers the product will exhibit a light texture due to the sand included in the product.

Flowfresh SL & MF



Self-smoothing polyurethane screeds for use in dry areas subject to light-medium traffic.

Best suited to packaging areas and processing zones subject to light-medium foot and wheeled traffic, these trowel applied systems deliver a seamless, joint-free, smooth matt finish.



Hygienic:

Contains Polygiene® - an antimicrobial additive that kills up to 99.9% bacteria.



Accredited:

HACCP International certified and complies with USDA and FDA guidelines.



Heat Resistant:

Resistant to temperatures of up to 90°C.



Chemical Resistant:

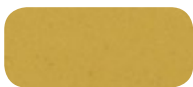
Protects against the majority of acids used in manufacturing processes.



Abrasion Resistant:

Holds its own against impact, traffic and chemical attack.

Colours



Rich Cream



Warm Buff



Coral Red



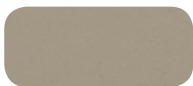
Clay



Pewter Grey



Shamrock Green



Ash Grey



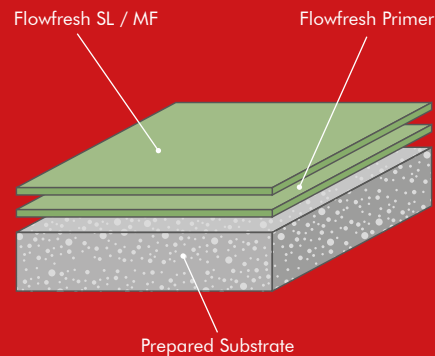
Blue

The applied colours may differ from the examples shown. For a full colour chart and samples, contact your local Flowcrete office.

Technical Profile

TEMPERATURE RESISTANCE	
SL	MF
2mm: From 5°C to 65°C	3mm: From -5°C to 70°C 4mm: From -15°C to 90°C
WATER PERMEABILITY	
Karsten Test	Nil (Impermeable)
FIRE RESISTANCE	
EN 13501-1	B _{FL} - s1
SLIP RESISTANCE	
Method described in BS 7976-2 (typical values for 4-S rubber slider)	Dry >40, Wet depends on specification (in accordance with HSE and UKSRG guidelines)
ABRASION RESISTANCE	
Taber Abrader	0.1 g loss per 1000 cycles (1 kg load using CS17 wheels)
COMPRESSIVE STRENGTH	
EN 13892-2	>50 N/mm ²
FLEXURAL STRENGTH	
EN 13892-2	>20 N/mm ²
TENSILE STRENGTH	
BS 6319	(SL) >10 N/mm ² (MF) 7 N/mm ²
BOND STRENGTH	
ASTM D4541 (Pull-Off Test)	>1.5 MPa*

SPEED OF CURE**	10°C	20°C	30°C
Light Traffic	36 hrs	24 hrs	12 hrs
Full Traffic	72 hrs	48 hrs	24 hrs
Full Chemical Cure	10 days	7 days	6 days



*Assumes concrete compressive strength is greater than 25 N/mm²

** Cure times at temperatures between 0-30°C can be achieved by altering the quantity of catalyst used. For applications falling outside of this temperature range, please contact your local Flowcrete Technical Department.



Application Suitability

Light - Medium Traffic 2mm	✓
Medium - Heavy Traffic 3-4mm	✓
Industrial Kitchens / Semi Dry Areas	✓
Packaging Areas	✓
Loading Bays	✓
Laboratories / Quality Control	✓
Dispensaries	✓
Cold Stores / Freezers	



Application Suitability

Dry Process (Med/Heavy Traffic)	✓
Wet Process (Med/Heavy Traffic)	✓
Industrial Kitchens / Wash Areas	✓
Packaging Areas	
Chemical / Solvent Stores	✓
Loading Bays	✓
Laboratories / Quality Control	
Dispensaries	
Cold Stores / Freezers	✓



Flowfresh HF & RT



Slip-resistant polyurethane screeds for use in wet areas subject to high volumes of traffic.

Best suited to wet processing zones subject to high volumes of foot and wheeled traffic, these trowel applied 6–9 mm systems deliver a seamless joint-free matt finish.



Hygienic:

Contains Polygiene® - an antimicrobial additive that kills up to 99.9% bacteria.



Accredited:

HACCP International certified and complies with USDA and FDA guidelines.



Heat Resistant:

Resistant to temperatures of up to 120°C.



Chemical Resistant:

Protects against the majority of acids used in manufacturing processes.



Slip Resistant:

Impressive anti slip profile in dry and wet conditions.

Colours



Rich Cream



Warm Buff



Coral Red



Clay



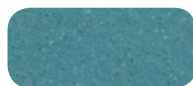
Ash Grey



Shamrock Green



Pewter Grey



Blue

The applied colours may differ from the examples shown. For a full colour chart and samples, contact your local Flowcrete office.

Technical Profile

TEMPERATURE RESISTANCE

From -25°C to 100°C (at 6mm)
From -45°C to 120°C (at 9mm)

WATER PERMEABILITY

Karsten Test Nil (Impermeable)

FIRE RESISTANCE

EN 13501-1 B_{FL} - s1

SLIP RESISTANCE

Method described in BS 7976-2 (typical values for 4-S rubber slider)
Dry >40, Wet depends on specification (in accordance with HSE and UKSRG guidelines)

ABRASION RESISTANCE

Taber Abrader 0.12 g loss per 1000 cycles (1 kg load using CS17 wheels)

COMPRESSIVE STRENGTH

EN 13892-2 >50 N/mm²

FLEXURAL STRENGTH

EN 13892-2 >20 N/mm²

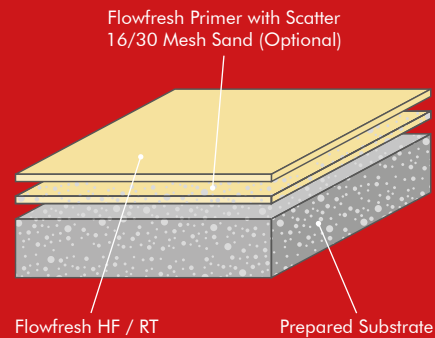
TENSILE STRENGTH

BS 6319 >10 N/mm²

BOND STRENGTH

ASTM D4541 (Pull-Off Test) >1.5 MPa*

SPEED OF CURE**	10°C	20°C	30°C
Light Traffic	36 hrs	24 hrs	12 hrs
Full Traffic	72 hrs	48 hrs	24 hrs
Full Chemical Cure	10 days	7 days	6 days



*Assumes concrete compressive strength is greater than 25 N/mm²

** Cure times at temperatures between 0-30°C can be achieved by altering the quantity of catalyst used. For applications falling outside of this temperature range, please contact your local Flowcrete Technical Department.

Flowfresh SR



Flowfresh SR is a heavy duty polyurethane screed with an anti slip finish.

Suited to all zones subject to heavy foot and wheeled traffic, such as wet processing areas or food preparation zones, this trowel applied 3mm to 4mm system delivers an anti slip floor finish.



Hygienic:

Contains Polygiene® - an antimicrobial additive that kills up to 99.9% bacteria.



Accredited:

HACCP International certified and complies with USDA and FDA guidelines.



Chemical Resistant:

Protects against the majority of acids used in manufacturing processes.



Slip Resistant:

Impressive anti slip profile in dry and wet conditions.



Abrasion Resistant:

Holds its own against impact, traffic and chemical attack.

Colours



Rich Cream*



Warm Buff



Coral Red



Clay



Ash Grey



Shamrock Green



Pewter Grey



Blue

Technical Profile

TEMPERATURE RESISTANCE

From -15°C to 90°C

WATER PERMEABILITY

Karsten Test Nil (Impermeable)

FIRE RESISTANCE

EN 13501-1 B_{FL} - s1

SLIP RESISTANCE

Method described in BS 7976-2 (typical values for 4-S rubber slider) Dry >40, Wet depends on specification (in accordance with HSE and UKSRG guidelines)

ABRASION RESISTANCE

Taber Abrader 0.1 g loss per 1000 cycles (1 kg load using CS17 wheels)

COMPRESSIVE STRENGTH

EN 13892-2 >50 N/mm²

FLEXURAL STRENGTH

EN 13892-2 >20 N/mm²

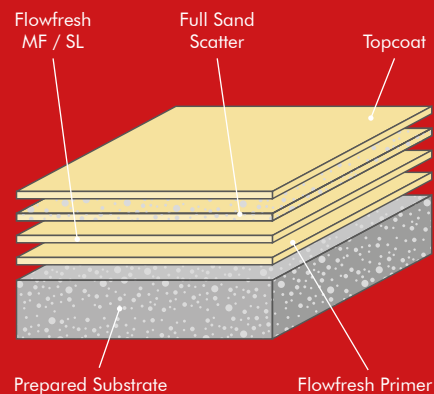
TENSILE STRENGTH

BS 6319 7 N/mm²

BOND STRENGTH

ASTM D4541 (Pull-Off Test) >1.5 MPa*

SPEED OF CURE**	10°C	20°C	30°C
Light Traffic	36 hrs	24 hrs	12 hrs
Full Traffic	72 hrs	48 hrs	24 hrs
Full Chemical Cure	12 days	7 days	6 days



*Assumes concrete compressive strength is greater than 25 N/mm²

** Cure times at temperatures between 0-30°C can be achieved by altering the quantity of catalyst used. For applications falling outside of this temperature range, please contact your local Flowcrete Technical Department.

*Additional topcoat is required for Rich Cream and other lighter colours.

The applied colours may differ from the examples shown. For a full colour chart and samples, contact your local Flowcrete office.

Application Suitability

Dry Process (Med/Heavy Traffic)	
Wet Process (Med/Heavy Traffic)	✓
Industrial Kitchens / Wash Areas	✓
Packaging Areas	
Chemical / Solvent Stores	
Loading Bays	
Laboratories / Quality Control	
Dispensaries	✓
Cold Stores / Freezers	



Application Suitability

Dry Process (Med/Heavy Traffic)	
Wet Process (Med/Heavy Traffic)	✓
Industrial Kitchens / Wash Areas	✓
Packaging Areas	
Chemical / Solvent Stores	
Loading Bays	
Laboratories / Quality Control	
Dispensaries	✓
Cold Stores / Freezers	



Flowfresh SRQ



A heavy duty decorative screed with a coloured quartz aggregate that provides anti slip properties.

Suited to all zones subject to heavy foot and wheeled traffic, such as wet processing areas or food preparation zones, this trowel applied system delivers a decorative joint-free floor finish.



Hygienic:

Contains Polygiene® - an antimicrobial additive that kills up to 99.9% bacteria.



Accredited:

HACCP International certified and complies with USDA and FDA guidelines.



Decorative:

Offers an attractive finish to enhance the working environment.



Chemical Resistant:

Protects against the majority of acids used in manufacturing processes.



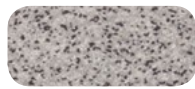
Slip Resistant:

Impressive anti slip profile in dry and wet conditions.

Colours



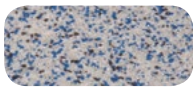
Dark Grey



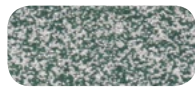
Mid Grey



Light Grey



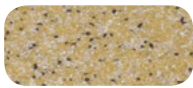
Light Blue



Green



Red



Yellow



Brown

The applied colours may differ from the examples shown. For a full colour chart and samples, contact your local Flowcrete office.

Technical Profile

TEMPERATURE RESISTANCE

90°C (continuous exposure)
110°C (intermittent spills)

WATER PERMEABILITY

Karsten Test Nil (Impermeable)

FIRE RESISTANCE

EN 13501-1 B_{FL} - s1

SLIP RESISTANCE

Method described in BS 7976-2 (typical values for 4-S rubber slider)
Dry >40, Wet depends on specification (in accordance with HSE and UKSRG guidelines)

ABRASION RESISTANCE

Taber Abrader 0.12 g loss per 1000 cycles (1 kg load using CS17 wheels)

COMPRESSIVE STRENGTH

EN 13892-2 >50 N/mm²

FLEXURAL STRENGTH

EN 13892-2 >20 N/mm²

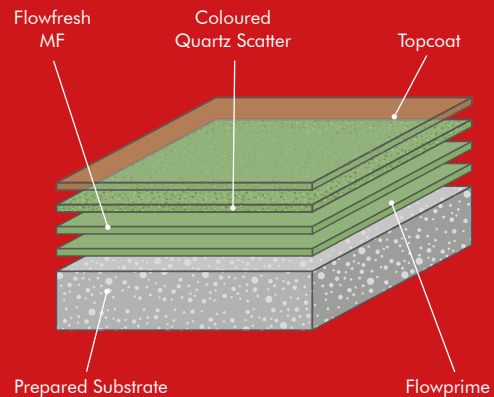
TENSILE STRENGTH

BS 6319 >10 N/mm²

BOND STRENGTH

ASTM D4541 (Pull-Off Test) >1.5 MPa*

SPEED OF CURE**	10 °C	20 °C	30 °C
Light Traffic	36 hrs	24 hrs	12 hrs
Full Traffic	72 hrs	48 hrs	24 hrs
Full Chemical Cure	10 days	7 days	6 days



*Assumes concrete compressive strength is greater than 25 N/mm²

** Cure times at temperatures between 0-30 °C can be achieved by altering the quantity of catalyst used. For applications falling outside of this temperature range, please contact your local Flowcrete Technical Department.

Flowcrete
for the world at your feet



www.flowcreteasia.com



asia@flowcrete.com