



RUSTIK

- ▶ A range of decorative, joint-free stone carpets that bring the vibrancy of the outdoors inside.

Rustik Range Technical Profile



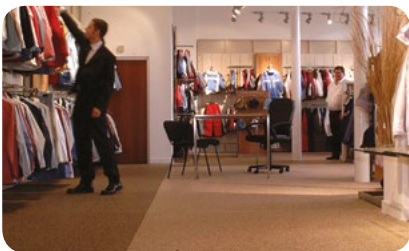
Rustik, Flowcrete Asia's range of decorative stone carpet systems, delivers a wide range of natural and contemporary tones to suit both indoor and outdoor environments.

Whether in a retail or office environment, leisure complex or showroom, Rustik won't fail to impress. Boasting slip and chemical resistance, as well as superior durability, Rustik transforms dull commercial environments whilst delivering a floor finish that withstands cleaning products and chemical attack, provides a safe finish underfoot and stands the test of time.

Rustik can be installed in a variety of patterns using brass or aluminium trims, which are laid on the surface of the floor in a matrix that designates each area of the design. Rustik is then simply used to fill each shape, using contrasting colours to create a truly unique and personalised design.

What's more, the Rustik range benefits from a speedy installation process, reducing impact on trade in commercial businesses, where keeping downtime to a minimum is crucial.

Application Suitability



Retail Outlets



Car Showrooms



Walkways & Paths



Residential

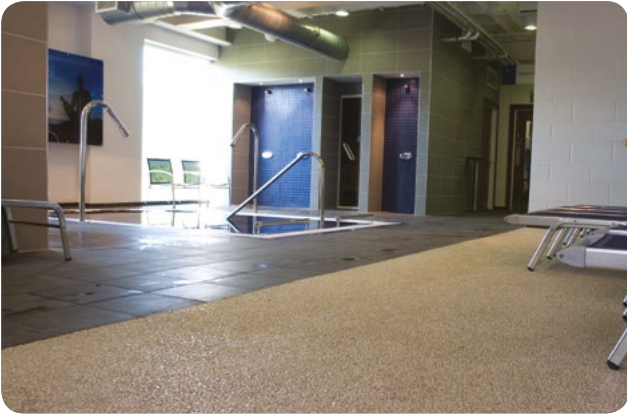


Offices & Lobbies



Hotels & Resorts





Rustik

Rustik comes in a variety of colourful natural stones encapsulated in a clear epoxy resin, resulting in attractive indoor anti-slip flooring.

Rustik cosmetically enhances, reduces noise, and is easy to clean whilst being highly resistant to chemicals, making it suitable for a limitless list of indoor environments from showrooms and shopping centres to spas, offices and more.



Attractive:

Decorative finish to transform dull commercial environments.



Resistant:

Excellent resistance to chemicals, as well as slips and trips.



Solvent Free & Low Odour:

Improved air quality during installation and beyond.



Reduces Noise:

Minimises unwanted noise from footsteps in busy commercial spaces.



Versatile:

Rustik can be applied vertically to walls.

Colours



Burnt Amber



Jasper



Grey Moonstone



White Sapphire



Black Sapphire



Smokey Quartz

The applied colours may differ from the examples shown. For a full colour chart and samples, contact your local Flowcrete office.

Technical Profile

APPLICATION SUITABILITY

✓ New Build ✓ Refurbishment

SLIP RESISTANCE

Method described in BS 7976-2 (typical values for 4-S rubber slider) Dry > 40, Wet depends on specification (in accordance with HSE and UKSRG guidelines)

FIRE RESISTANCE

SITAC Class G
Certificate No 1721/75

TEMPERATURE RESISTANCE

Tolerant of sustained temperatures up to 60°C

ABRASION RESISTANCE

BS8204:Part 2:2002 Class AR2 – Medium duty industrial and commercial

CHEMICAL RESISTANCE

Contact Technical Department

BOND STRENGTH

Greater than cohesive strength of 25 N/mm² concrete > 1.5 MPa*

COMPRESSIVE STRENGTH

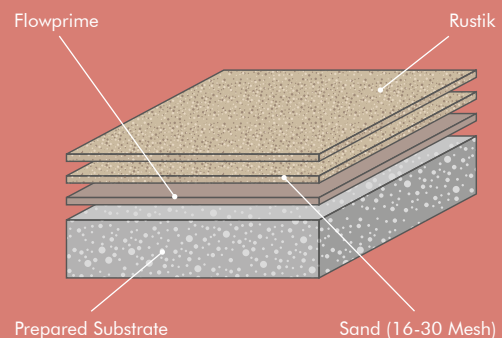
BS6319 > 30 N/mm²

FLEXURAL STRENGTH

BS6319 10 N/mm²

SPEED OF CURE**

	10°C	20°C	30°C
Light Traffic	36 hrs	24 hrs	16 hrs
Full Traffic	72 hrs	48 hrs	36 hrs
Full Chemical Cure	12 days	7 days	6 days



*Assumes concrete compressive strength is greater than 25N/mm²

** Cure times at temperatures between 0-30°C can be achieved by altering the quantity of catalyst used. For applications falling outside of this temperature range, please contact your local Flowcrete Technical Department.

Rustik UV

Rustik UV contains colourful natural stones, encapsulated in a aliphatic, UV stable polyurethane resin, providing attractive reliable outdoor flooring.

Designed to be a flexible solution for areas with heavy traffic, Rustik UV is weather resistant and offers a durable alternative to loose pebbles, whilst maintaining the natural beauty of the outdoors.



Attractive:

Decorative finish to transform dull commercial environments.



Resistant:

Excellent resistance to chemicals, and general wear and tear.



Solvent Free & Low Odour:

Improved air quality during installation and beyond.



Reduces Noise:

Minimises unwanted noise from footsteps in busy commercial spaces.



UV Stable:

100% UV light stable. Prevents from yellowing effect.

Colours



Burnt Amber



Jasper



Grey Moonstone



White Sapphire



Black Sapphire



Smokey Quartz

The applied colours may differ from the examples shown. For a full colour chart and samples, contact your local Flowcrete office.

Technical Profile

APPLICATION SUITABILITY

✓ New Build ✓ Refurbishment

SLIP RESISTANCE

Method described in BS 7976-2 (typical values for 4-S rubber slider) Dry > 40, Wet depends on specification (in accordance with HSE and UKSRG guidelines)

TEMPERATURE RESISTANCE

Tolerant of sustained temperatures up to 65°C

CHEMICAL RESISTANCE

Contact Technical Department

BOND STRENGTH

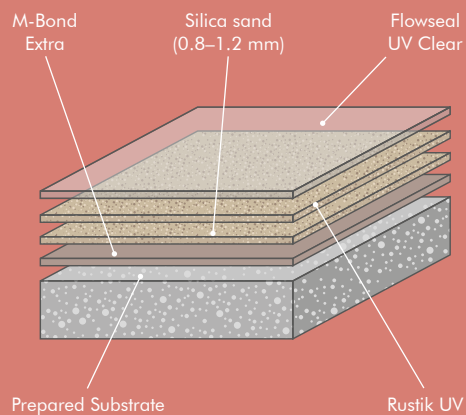
Greater than cohesive strength of 25 N/mm² concrete > 1.5 MPa*

COMPRESSIVE STRENGTH

BS6319 > 30 N/mm²

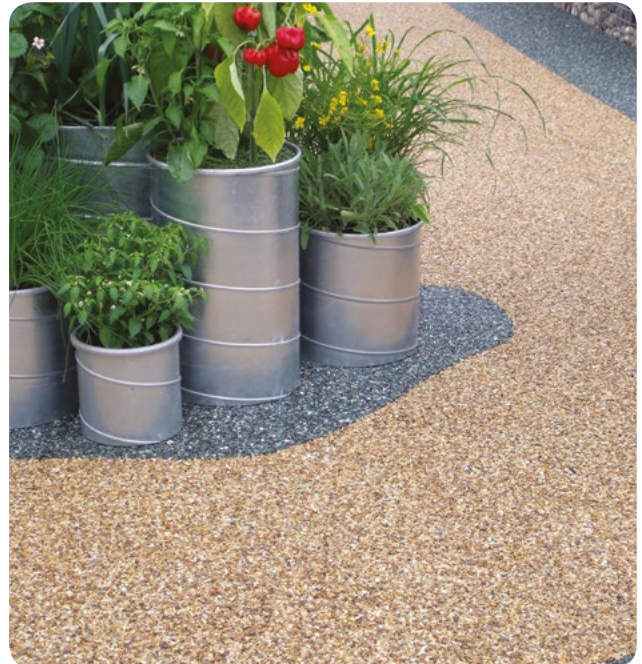
SPEED OF CURE**

	10°C	20°C	30°C
Light Traffic	36 hrs	24 hrs	16 hrs
Full Traffic	72 hrs	48 hrs	36 hrs
Full Chemical Cure	12 days	7 days	6 days



*Assumes concrete compressive strength is greater than 25N/mm²

** Cure times at temperatures between 0-30°C can be achieved by altering the quantity of catalyst used. For applications falling outside of this temperature range, please contact your local Flowcrete Technical Department.



Flowcrete
for the world at your feet



www.flowcreteasia.com



asia@flowcrete.com