



► Specialist resin and HACCP International certified antimicrobial treated floor coating systems designed to cater for...

FOOD & BEVERAGE PROCESSING

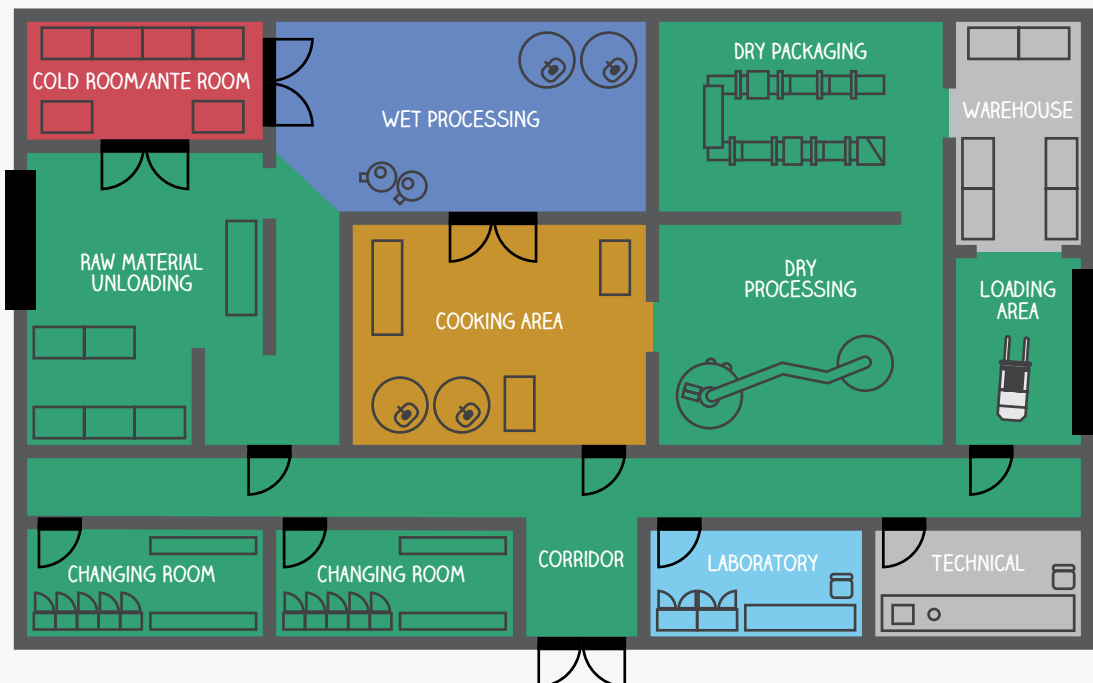
Welcome to Flowcrete

Food and beverage manufacturing facilities include a diverse range of wet and dry processing environments as well as non-processing areas such as laboratories, changing rooms, corridors and warehouse areas. Each of these are subject to a host of challenges, including wet conditions, extreme temperature swings and heavy traffic as well as attack from chemicals and corrosive ingredients.

As such, each area of the food and beverage processing facility requires protective floor coating systems that meet strict hygiene and safety protocols in line with local regulations and HACCP principles as well as the individual performance characteristics needed to withstand their unique service conditions.

Flowcrete offers a complete package of speciality floor coating systems designed to cater for all areas within a food and beverage processing environment.

Food & Beverage Processing Floor Plan



Flowfresh MF



Flowfresh RT & HF



Flowcoat HTS



Flowfresh SR



Flowfresh SRQ



Flowshield CR



For the application suitability of each system, look out for the check mark symbol throughout the brochure.



Polygiene® Antimicrobial Effectiveness



Salmonella Typhi	✓
MRSA	✓
Enterococcus Faecalis	✓
E-coli	✓
Staphylococcus Aureus	✓
Listeria	✓
Streptococcus Pyogenes	✓
C.difficile	✓
Pseudomonas Aeruginosa	✓
Proteus Vulgaris	✓
Campila Bacta	✓



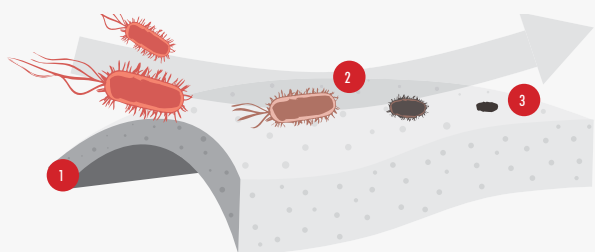
HACCP International Certified Hygienic Flooring

A food processing floor is subject to constant traffic, impact damage due to equipment handling and often subject to attack from chemicals and corrosive ingredients.

Resin flooring systems ensure a non-porous, smooth and seamless surface where there is nowhere for bacteria or mould spores to grow.

Flowcrete's HACCP International certified and ISO 22196 compliant polyurethane flooring materials offer enhanced protection with the inclusion of Polygiene®, a silver-ion antimicrobial agent, designed to protect the surface from degradation caused by microbial growth.

How Does Polygiene® Work?



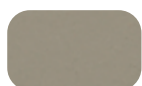
- 1 The silver ions are homogeneously distributed throughout the floor.
- 2 The silver ions migrate to the surface.
- 3 They protect the surface from degradation caused by microbial growth.

Flowfresh MF (3–4 mm)

A chemical resistant, antimicrobial floor, best suited to packaging areas and processing zones subject to medium to heavy foot and wheeled traffic, this HACCP International certified system delivers a joint-free, smooth matt finish.

☒ **LOADING & UNLOADING, DRY PROCESSING & PACKAGING, CHANGING ROOMS, CORRIDORS**

Standard Colours



Ash Grey



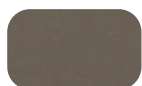
Blue



Clay



Coral Red



Pewter Grey



Shamrock Green



Warm Buff



TEMPERATURE RESISTANCE

From -5°C to 90°C

SLIP RESISTANCE

Method described in BS 7976-2 (typical values for 4-S rubber slider)

Dry > 40, Wet depends on specification (in accordance with HSE & UKSRG guidelines)

ABRASION RESISTANCE

Taber Abrader

0.1g loss per 1000 cycles (1kg load using CS17 wheels)

WATER PERMEABILITY

Karsten Test

Nil (Impermeable)

ISO 22196



Flowfresh SR (3–4 mm)

A heavy duty, HACCP International certified, polyurethane floor with a positively textured finish. Suited to all zones subject to heavy foot and wheeled traffic, this trowel applied 3–4 mm system delivers an anti slip floor finish.

☒ **COOKING AREAS**

Standard Colours



Ash Grey



Blue



Clay



Coral Red



Pewter Grey



Shamrock Green



Warm Buff

TEMPERATURE RESISTANCE

From -15°C to 90°C

SLIP RESISTANCE

Method described in BS 7976-2 (typical values for 4-S rubber slider)

Dry > 40, Wet depends on specification (in accordance with HSE & UKSRG guidelines)

ABRASION RESISTANCE

Taber Abrader

0.1g loss per 1000 cycles (1kg load using CS17 wheels)

WATER PERMEABILITY

Karsten Test

Nil (Impermeable)

Applied colours may differ from the examples shown. For a full technical profile, colour chart and samples, contact your local Flowcrete office.



Flowfresh SRQ

(Thickness dependent on specification)

A heavy duty, antimicrobial, polyurethane floor with coloured quartz aggregates. Suited to all zones subject to heavy foot and wheeled traffic, this HACCP International certified system delivers a decorative, anti slip, joint-free floor finish.

✓ WET PROCESSING

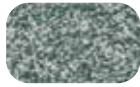
Standard Colours



Brown



Dark Grey



Green



Light Blue



Light Grey



Mid Grey



Red



Yellow



TEMPERATURE RESISTANCE

90°C (continuous exposure), 110°C (intermittent spills)

SLIP RESISTANCE

Method described in BS 7976-2 (typical values for 4-S rubber slider)

Dry > 40, Wet depends on specification (in accordance with HSE & UKSRG guidelines)

ABRASION RESISTANCE

Taber Abrader

0.12g loss per 1000 cycles (1kg load using CS17 wheels)

WATER PERMEABILITY

Karsten Test

Nil (Impermeable)

ISO 22196



Flowfresh RT & HF (6–9 mm)

A slip-resistant, HACCP International certified, polyurethane screed for use in wet processing zones and thermal shock areas where it is subject to high volumes of foot and wheeled traffic, these trowel applied 6–9mm systems deliver a seamless joint-free matt finish.

✓ COLD ROOMS

Standard Colours



Ash Grey



Blue



Clay



Coral Red



Pewter Grey



Shamrock Green



Warm Buff

TEMPERATURE RESISTANCE

From -25°C to 120°C

SLIP RESISTANCE

Method described in BS 7976-2 (typical values for 4-S rubber slider)

Dry > 40, Wet depends on specification (in accordance with HSE & UKSRG guidelines)

ABRASION RESISTANCE

Taber Abrader

0.12g loss per 1000 cycles (1kg load using CS17 wheels)

WATER PERMEABILITY

Karsten Test

Nil (Impermeable)

Applied colours may differ from the examples shown. For a full technical profile, colour chart and samples, contact your local Flowcrete office.



Flowcoat HTS

(Thickness dependent on specification)

A high performance, UV light stable, chemical resistant, pigmented hybrid polyurethane coating system. Ideal for use in heavy traffic environments where abrasion resistance is essential.

✓ WAREHOUSES, TECHNICAL OFFICES

Standard Colours



TEMPERATURE RESISTANCE

Tolerant up to 70°C

SLIP RESISTANCE

Method described in BS 7976-2 (typical values for 4-S rubber slider)

Dry > 40, Wet depends on specification (in accordance with HSE & UKSRG guidelines)

ABRASION RESISTANCE

Taber Abrader

40mg loss per 1000 cycles (1kg load using CS17 wheels)

BS 8204-2

Grade AR2

WATER PERMEABILITY

Karsten Test

Nil (Impermeable)



Flowshield CR (2–3 mm)

A chemical resistant, self-smoothing epoxy resin flooring system used in dry processing areas where the floor is subject to chemical spillage as well as medium to heavy traffic.

✓ LABORATORIES

Standard Colours



TEMPERATURE RESISTANCE

Tolerant up to 60°C

SLIP RESISTANCE

Method described in BS 7976-2 (typical values for 4-S rubber slider)

Dry > 40, Wet depends on specification (in accordance with HSE & UKSRG guidelines)

ABRASION RESISTANCE

Taber Abrader

90mg loss per 1000 cycles (1kg load using CS17 wheels)

WATER PERMEABILITY

Karsten Test

Nil (Impermeable)

Applied colours may differ from the examples shown. For a full technical profile, colour chart and samples, contact your local Flowcrete office.



Bacteria in Food Processing Environments

bac•ter•i•a Single-cell organisms that feed on nutrients in their surroundings to reproduce. Pathogenic bacteria are harmful to humans, and can enter the body through contaminated food.



Approximately **16%** of foodborne illness cases are attributed to a contaminated processing environment.

Foods most prone to bacterial contamination are:



Meat



Poultry



Eggs or foods made with raw eggs



Cold cooked seafood



Raw shellfish



Soft cheeses

Flowfresh Bacterial and Chemical Resistance

BACTERIAL RESISTANCE				CHEMICAL RESISTANCE*			
MRSA	✓	Enterococcus Faecalis	✓	Hydrochloric Acid 10%	✓	Methanol	✓
E-coli	✓	Staphylococcus Aureus	✓	Sulphuric Acid 10%	✓	Sugar Syrups	✓
Listeria	✓	Streptococcus Pyogenes	✓	Citric Acid 10%	✓	Caustic Soda	✓
C.difficile	✓	Pseudomonas Aeruginosa	✓	Acetic Acid 5%	✓	Petrol	✓
Proteus Vulgaris	✓	Campila Bacta	✓	Lactic Acid 10%	✓	Oil Ingredients	✓
Salmonella Typhi	✓			Phosphoric Acid 5%	✓	Detergents	✓

*Full chemical resistance chart available on request.



Flowcrete Flooring Systems Summary

	THICKNESS	TYPE	DESCRIPTION
Flowfresh MF	3–4 mm	Polyurethane	A matt finish polyurethane floor system for use in dry areas.
Flowfresh SR	3–4 mm	Polyurethane	A heavy duty polyurethane floor with an anti slip finish.
Flowfresh RT	6–9 mm	Polyurethane	A slip-resistant polyurethane screed for use in wet and thermal shock areas.
Flowfresh SRQ	Dependent on specification	Polyurethane	A heavy duty polyurethane floor with decorative, anti slip, coloured quartz aggregates.
Flowcoat HTS	Dependent on specification	Hybrid Polyurethane	A heavy duty pigmented hybrid polyurethane coating system.
Flowshield CR	2–3 mm	Epoxy	A chemical resistant, self-smoothing epoxy resin.



www.flowcreteasia.com



asia@flowcrete.com

*Whilst every care has been taken to ensure that the information included in this document was accurate at the time of printing, Tremco Construction Products Group APAC reserves the right to change product specifications at any time without prior notice. The photographs and colours reproduced in this publication are within the constraints of the printing process and are not to be used for matching purposes. All photographs are used for approximate representation only and may not show the actual products on offer. E&OE.

APACO10821

