

► Specialist resin and HACCP International certified antimicrobial treated floor coating systems designed to cater for...

## BREWERIES

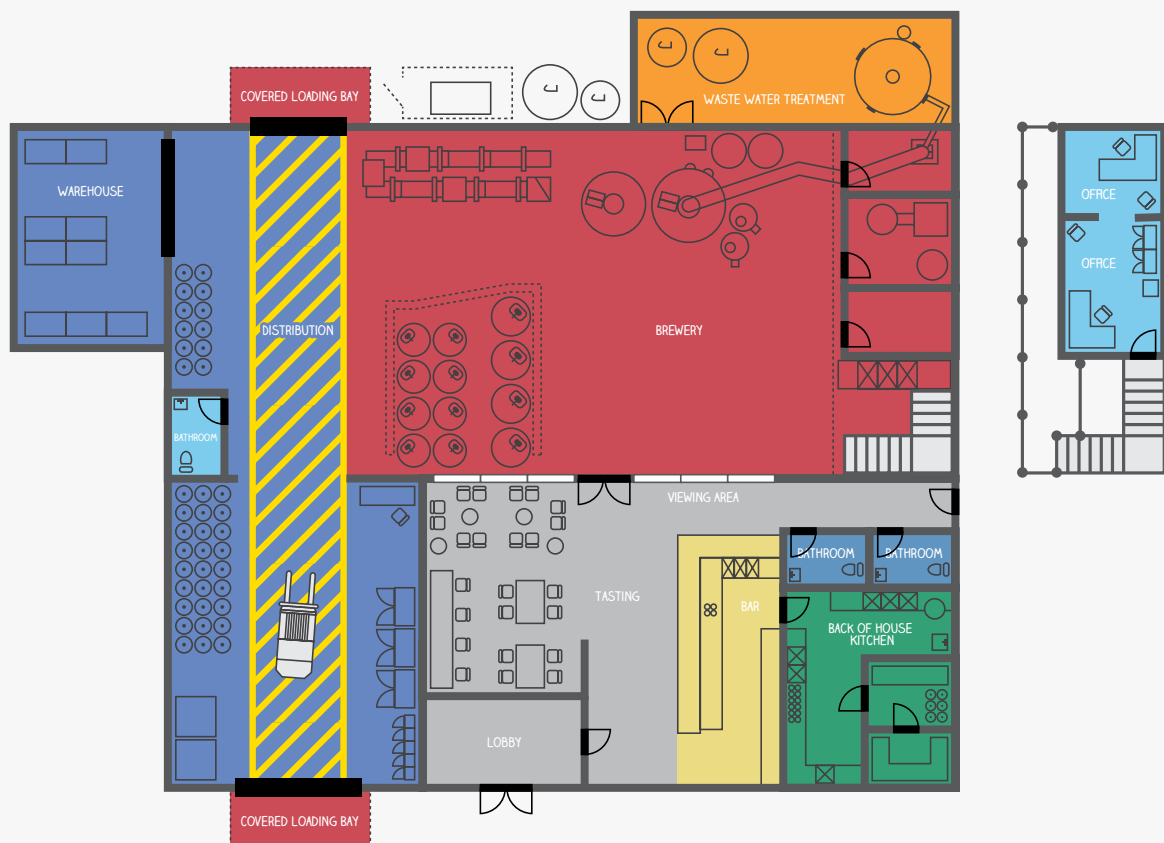
# Welcome to Flowcrete

Chances are the next time you visit your local watering hole you'll encounter specialty polymer flooring systems throughout the facility rather than the typical tile or ceramic finishes traditionally found in these environments.


You'll find these systems not only behind the scenes, where the ale is brewing and being bottled, but also in tasting rooms where it is being enjoyed. Resin flooring systems are being used more often in these environments owing to their excellent performance attributes combined with design versatility.

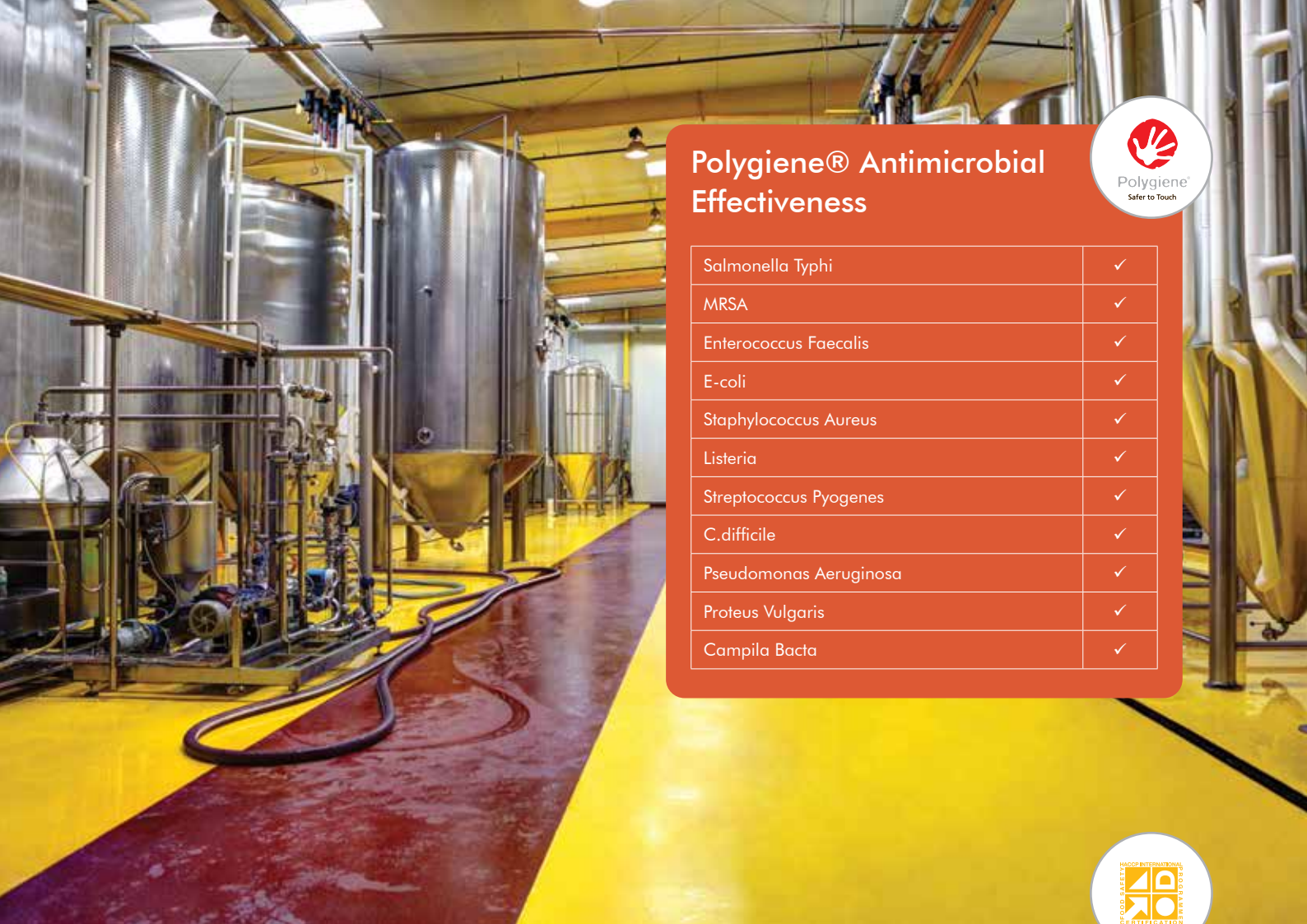
Flowcrete offers a complete package of specialist resin and HACCP International certified antimicrobial treated floor coating systems designed to cater for all areas within the brewhouse.

## Brewery Floor Plan



 Flowfresh RT	 Deckshield ID	 Flowflake Terrosso	 Flowchem VE GL
 Flowfresh SR	 Flowcoat QS	 Metallic Expressions	

 For the application suitability of each system, look out for the check mark symbol throughout the brochure.



## Polygiene® Antimicrobial Effectiveness



Salmonella Typhi	✓
MRSA	✓
Enterococcus Faecalis	✓
E-coli	✓
Staphylococcus Aureus	✓
Listeria	✓
Streptococcus Pyogenes	✓
C.difficile	✓
Pseudomonas Aeruginosa	✓
Proteus Vulgaris	✓
Campila Bacta	✓



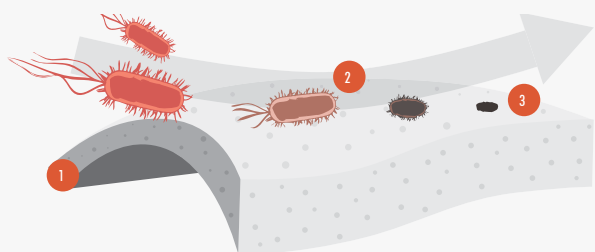
## HACCP International Certified Hygienic Flooring

Brewery floors are subject to spills and staining as well as heavy loads and foot traffic. Caustic chemicals, thermal shock, slip resistance and hygiene are also a concern.

Resin flooring systems ensure a non-porous, smooth and seamless surface where there is nowhere for bacteria or mold spores to grow.

Flowcrete's HACCP International certified and ISO 22196 compliant cementitious polyurethane flooring materials offer enhanced protection with the inclusion of Polygiene®, a silver-ion antimicrobial agent, designed to protect the surface from degradation caused by microbial growth.

### How Does Polygiene® Work?



- 1 The silver ions are homogeneously distributed throughout the floor.
- 2 The silver ions migrate to the surface.
- 3 They protect the surface from degradation caused by microbial growth.



## Flowfresh RT (6–9mm)

A HACCP International certified, heavy duty, chemical resistant, antimicrobial polyurethane resin floor screed, incorporating Polygiene® to inhibit the growth of bacteria.

✓ BREWERIES, COVERED LOADING BAYS

### Standard Colours



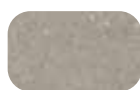
Warm Buff



Coral Red



Clay



Ash Grey



Shamrock Green



Pewter Grey



Blue



#### SLIP RESISTANCE

TRRL Pendulum Slip Test

Dry > 40, Wet depends on specification (in accordance with HSE and UKSRG guidelines)

#### TEMPERATURE RESISTANCE

From -25°C to 100°C (at 6mm)

From -45°C to 120°C (at 9mm)

#### ABRASION RESISTANCE

Taber Abrader (1 kg load using CS17 wheels)

0.12g loss per 1000 cycles

ISO 22196



## Flowfresh SR (3–4mm)

A HACCP International certified antimicrobial, positively textured polyurethane resin floor system, incorporating Polygiene® to inhibit the growth of bacteria.

✓ KITCHENS

### Standard Colours



Warm Buff



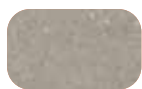
Coral Red



Clay



Shamrock Green



Ash Grey



Pewter Grey



Blue

#### SLIP RESISTANCE

TRRL Pendulum Slip Test

Dry > 40, Wet depends on specification (in accordance with HSE and UKSRG guidelines)

#### TEMPERATURE RESISTANCE

From -15°C to 90°C

#### ABRASION RESISTANCE

Taber Abrader (1 kg load using CS17 wheels)

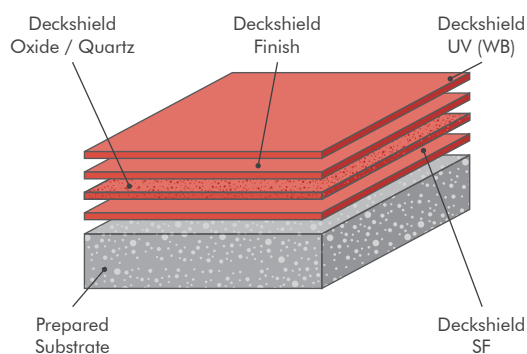
0.1g loss per 1000 cycles

# Deckshield ID

(Thickness dependent on specification)

A Green Label certified, low VOC, solvent free, flexible polyurethane car park deck coating system providing a colourful watertight, hard wearing surface for intermediate and basement decks of multi-storey car parking facilities.

## ✓ DISTRIBUTION CENTRES, WAREHOUSES



### SLIP RESISTANCE

TRRL Pendulum Slip Test	Dry > 40, Wet depends on specification (in accordance with HSE and UKSRG guidelines)
-------------------------	--

### TEMPERATURE RESISTANCE

Softens over 70°C, hardens on cooling

### ABRASION RESISTANCE

ASTM D4060 (1 kg load using CS17 wheels)	0.1g loss per 1000 cycles
--	---------------------------



# Flowcoat QS

(Thickness dependent on specification)

A hard wearing, decorative, solvent free epoxy colour quartz scatter system, for use in areas where the floor is subject to moderate traffic, impact and chemical spills.

### SLIP RESISTANCE

TRRL Pendulum Slip Test	Dry > 40, Wet depends on specification (in accordance with HSE and UKSRG guidelines)
-------------------------	--

### TEMPERATURE RESISTANCE

Tolerant of sustained temperatures up to 60°C

### COMPRESSIVE STRENGTH

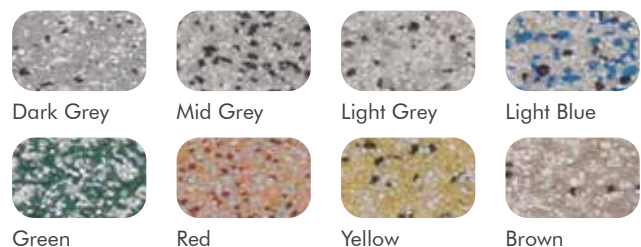
BS 6319	>60 N/mm <sup>2</sup>
---------	-----------------------

### FLEXURAL STRENGTH

BS 6319	15 N/mm <sup>2</sup>
---------	----------------------

## ✓ BARS

## Standard Colours



Applied colours may differ from the examples shown. For a full technical profile, colour chart and samples, contact your local Flowcrete representative.

# Flowflake Terroso

(Thickness dependent on specification)

An attractive floor coating system featuring varying sizes of flakes scattered over a pigmented epoxy base coat and finished with a tough resistant clear sealer.

✓ BATHROOMS, OFFICES, LOBBIES

## Standard Colours



Black Granite



Glacier



Freckle



Frosty



Grey Granite



Moonlite



Oyster



Storm



### SLIP RESISTANCE

TRRL Pendulum Slip Test

Dry > 40, Wet depends on specification (in accordance with HSE and UKSRG guidelines)

### TEMPERATURE RESISTANCE

Tolerant of sustained temperatures up to 60°C

### ABRASION RESISTANCE

BS8204-2

Class AR2, medium duty industrial and commercial



# Metallic Expressions EP

(Thickness dependent on specification)

A highly decorative, hard wearing, epoxy floor finish that provides a unique metallic effect across the surface of the floor using specialist application techniques.

✓ TASTING ROOMS

## Standard Colours



Blue Lagoon



Coffee



Cosmo



Grey Goose



Latte



Merlot



Mojito



Sangria

### SLIP RESISTANCE

TRRL Pendulum Slip Test

Dry > 40, Wet depends on specification (in accordance with HSE and UKSRG guidelines)

### TEMPERATURE RESISTANCE

Tolerant up to 60°C

### ABRASION RESISTANCE

Taber Abrader (1 kg load using CS17 wheels)

60mg loss per 1000 cycles

Applied colours may differ from the examples shown. For a full technical profile, colour chart and samples, contact your local Flowcrete representative.



# Flowchem VE GL (1.5–3 mm)

A roller or spray applied vinyl ester resin based Fiberglass reinforced lining system providing excellent chemical resistance, thermal resistant and protecting concrete or steel structures from various mechanical stresses.

 WASTE WATER TREATMENT

## Standard Colours



Green



Steel Grey



Charcoal



Light Grey



### TEMPERATURE RESISTANCE

Tolerant up to 165°C

### BARCOL HARDNESS

ASTM 2583 >30

### E-MODULUS

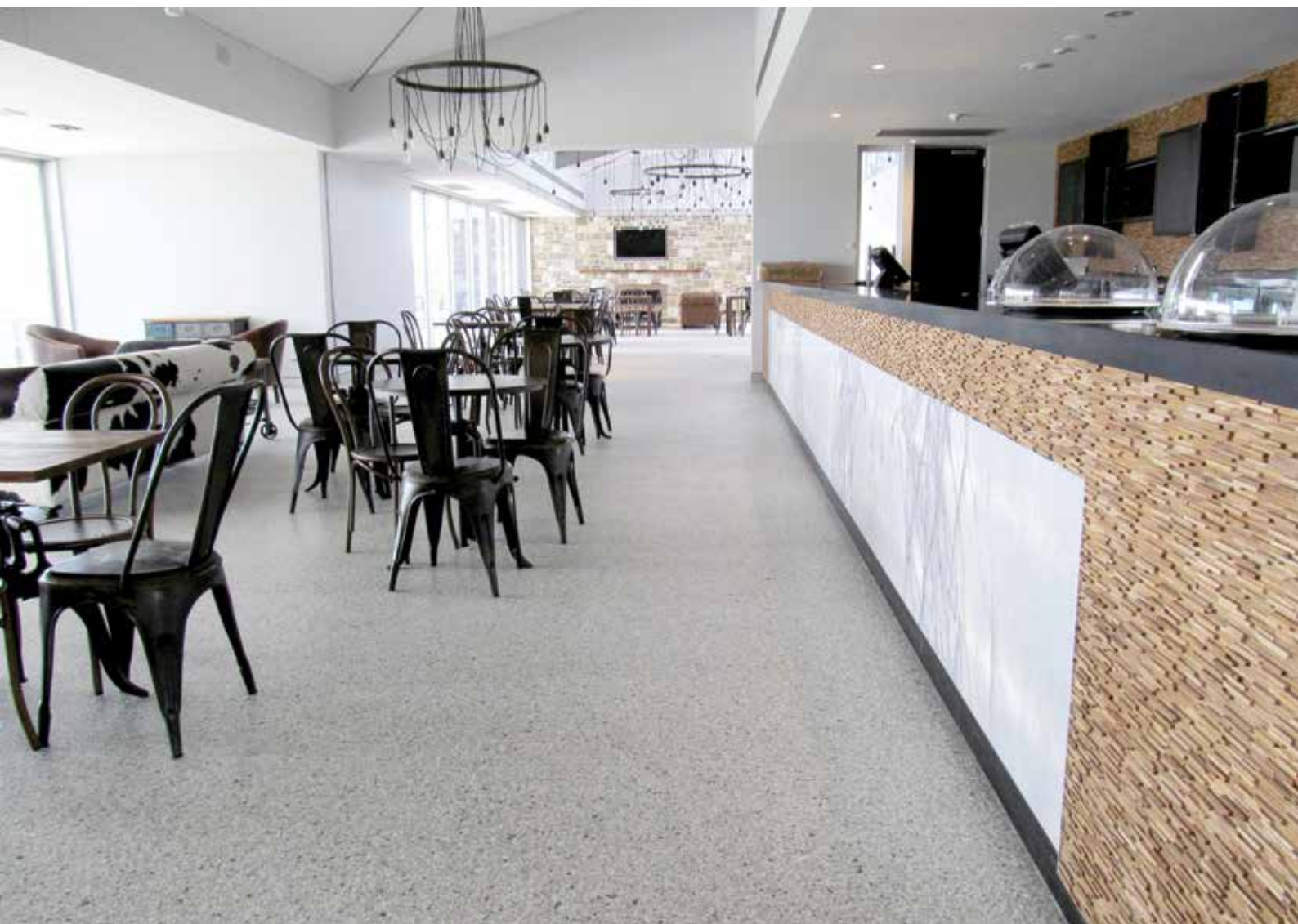
ASTM D-695 3.1 GPa

### VOLUME SHRINKAGE\*

ASTM D2566 7.5–9.8%

\* Ranges provided to cover results from various resin types.

Applied colours may differ from the examples shown. For a full technical profile, colour chart and samples, contact your local Flowcrete representative.





[www.flowcreteasia.com](http://www.flowcreteasia.com)



[asia@flowcrete.com](mailto:asia@flowcrete.com)

\*Whilst every care has been taken to ensure that the information included in this document was accurate at the time of printing, Tremco Construction Products Group APAC reserves the right to change product specifications at any time without prior notice. The photographs and colours reproduced in this publication are within the constraints of the printing process and are not to be used for matching purposes. All photographs are used for approximate representation only and may not show the actual products on offer. E&OE.

APAC011421

