

Mondéco ESD Earth (6 mm)

An antistatic, highly decorative, epoxy resin terrazzo floor finish that complies with IEC 61340-5-1 ESD requirements.

Provides a hard wearing, decorative, seamless, antistatic floor finish that is easy to clean.



Antistatic:

Meets the IEC 61340-5-1 specification for electrical resistance.



Decorative:

Aesthetically pleasing and enhances the working environment.



Solvent Free:

Solvent free, low in VOCs and environmentally friendly.



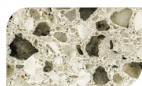
Abrasion Resistant:

Very high abrasion resistance to protect against heavy duty processes.

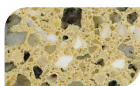


Hygienic:

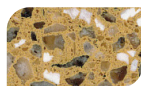
Seamless finish provides a surface that is easy to clean and maintain.



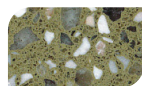
Coconut



Almond



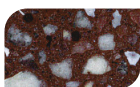
Peach



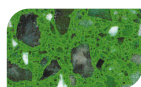
Pomegranate



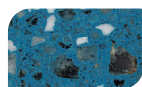
Tangerine



Chilli Pepper



Kiwi



Blueberry

The applied colours may differ from the examples shown. For a full colour chart and samples, contact your local Flowcrete office.



Technical Profile*

FIRE RESISTANCE			
EN 13501-1	B _{fl} - s1		
SLIP RESISTANCE**			
Method described in BS 7976-2 (typical values for 4-S rubber slider)		Dry >40, Wet depends on specification (in accordance with HSE and UKSRG guidelines)	
THERMAL RESISTANCE			
Tolerant up to 60°C			
IMPACT RESISTANCE			
BS 8204-1	Cat: A (<0.5mm)		
WATER PERMEABILITY			
Nil – Karsten test (impermeable)			
CHEMICAL RESISTANCE			
Contact Technical Department			
ABRASION RESISTANCE			
Taber Abrader (1 kg load using CS17 wheels)	50 mg loss per 1000 cycles		
COMPRESSIVE STRENGTH			
EN 13892-2	>55 N/mm ²		
FLEXURAL STRENGTH			
EN 13892-2	>20 N/mm ²		
TENSILE STRENGTH			
BS 6319	>10 N/mm ²		
BOND STRENGTH			
Greater than cohesive strength of 25 N/mm ² concrete. >1.5 MPa			
ELECTRICAL RESISTANCE			
EN IEC 61340-5-1	5.0 x 10 ⁴ – 1.0 x 10 ¹⁰ Ω		
SPEED OF CURE			
	10 °C	20 °C	30 °C
Light Traffic	24 h	20 h	16 h
Full Traffic	72 h	48 h	36 h
Full Chemical Cure	12 d	7 d	6 d

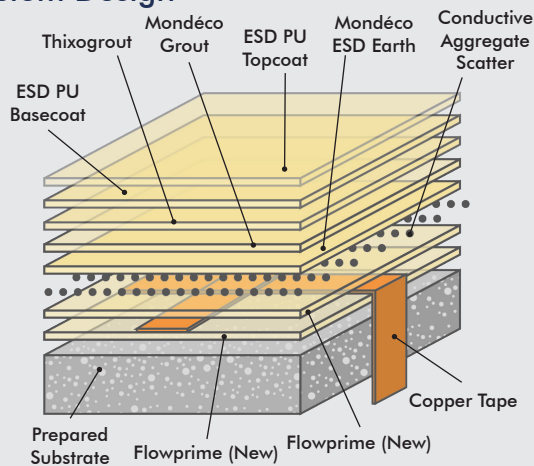
* These figures are typical properties achieved in laboratory tests at 20°C and at 50% Relative Humidity. **The slipperiness of flooring materials can change significantly, due to the installation process, after short periods of use, due to inappropriate maintenance, longer-term wear and/or surface contaminants (wet or dry). Textured systems are recommended to meet slip resistance value requirements for wet conditions and/or surface contaminants (wet or dry) - please contact our Technical Advisors for further details and specifications.

Model Specification

System	Mondéco ESD Earth
Finish	Satin / Matt
Thickness	8 mm (ground down to 6 mm)
Manufacturer	Tremco CPG Malaysia

Preparatory work and application in accordance with manufacturer's instructions.

System Design



Products Included In This System

Primer	Flowprime (New)
Copper Tape	(conductive grid of 10 mm wide copper tape)
Aggregates	Conductive Aggregates Scatter
Finishing Coat	Mondéco ESD Earth
1st Grout	Mondéco Grout
2nd Grout	ThixogROUT
First Sealer	ESD PU Basecoat
Second Sealer	ESD PU Topcoat

Detailed application instructions are available upon request.

Substrate Requirements

Concrete or screed substrate should be a minimum of 25 N/mm², free from laitance, dust and other contamination. Substrate should be dry up to 75% RH as per BS8204 and free from rising damp and ground water pressure. The level tolerance of the substrate should be to SR1.

Installation Service

The installation should be carried out by a licensed contractor with a documented quality assurance scheme. For details of our licensed contractors, contact our customer service team or enquire via our website at www.flowcreteasia.com

Environmental Considerations

The finished system is assessed as non-hazardous to health and the environment. The long service life and seamless surface reduce the need for repairs, maintenance and cleaning. Environmental and health considerations are controlled during manufacture and application of the products by Flowcrete staff and fully trained and experienced contractors.

Aftercare, Cleaning & Maintenance

Clean regularly using a single or double headed rotary scrubber drier in conjunction with a mildly alkaline detergent.

Microbial / Fungal Resistance

At an additional cost, an antimicrobial additive can be incorporated into Mondéco to provide control of most bacteria and fungi which come into contact with the floor.

Important Note

Flowcrete products are guaranteed against defective materials and manufacture and are sold subject to our standard 'Warranty, Terms and Conditions of Sale', copies of which can be obtained on request. Warranty does not cover suitability, fit for purpose or any consequential or related damages.

Further Information

To ensure you are specifying a fit-for-purpose floor, please consult our Technical Advisors or visit our website to register your interest in specifying one of the most durable floors on the market.

1. This product is not UV stable and may discolour unless otherwise stated 2. System Data Sheet to be read in conjunction with Method Statement and Product data Sheets.