



## Flowscreed Micro

A two-component, hard wearing, pigmented micro-cement system that provides a natural concrete floor aesthetic.

Ideal for use in resorts, hotels, showrooms, restaurants, cafes, lounges, museums, art galleries, offices, and residential spaces.



### Concrete Aesthetic:

Provides a luxurious natural concrete feel that complements neutral tones.



### Trowel Applied:

Seamless finish provides an alternative to tiles and eliminates unsightly grout.



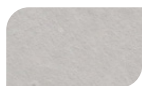
### Hard-Wearing:

Hard-wearing & abrasion resistant suitable for regular foot & trolley traffic.



### Hygienic & Easy to Clean:

The seamless finish allows the system to be cleaned easily.



Pewter



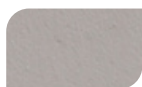
Luna



Cemento



Antique Grey



Cinnamon



Latte

The applied colours may differ from the examples shown.  
For a full colour chart and samples, contact your local Flowcrete office.



## Technical Profile\*

### SLIP RESISTANCE\*\*

Method described in  
BS 7976-2 (typical values  
for 4-S rubber slider)

Dry > 40,  
Wet > 36, low slip potential

### ABRASION RESISTANCE

Taber Abrader  
(1 kg load using CS10 wheels)

<50mg loss per 1000 cycles

### BOND STRENGTH

Greater than cohesive strength of 25 N/mm<sup>2</sup> concrete. > 1.5 MPa

### SPEED OF CURE\*\*\* (TOP COAT)

	10 °C	20 °C	30 °C
Light Traffic	36 h	12 h	10 h
Full Traffic	72 h	24 h	20 h
Full Chemical Cure	12 d	7 d	6 d

\* These figures are typical properties achieved in laboratory tests at 20°C and at 50% Relative Humidity.

\*\*The slipperiness of flooring materials can change significantly, due to the installation process, after short periods of use, due to inappropriate maintenance, longer-term wear and/or surface contaminants (wet or dry). Textured systems are recommended to meet slip resistance value requirements for wet conditions and/or surface contaminants (wet or dry) - please contact our Technical Advisors for further details and specifications.

\*\*\*Vary dependent on the environmental condition. Please consult Technical Department for more details.

## Model Specification

System	Flowscreed Micro
Finish	Matt
Thickness	2 - 3mm
Manufacturer	Tremco CPG Malaysia

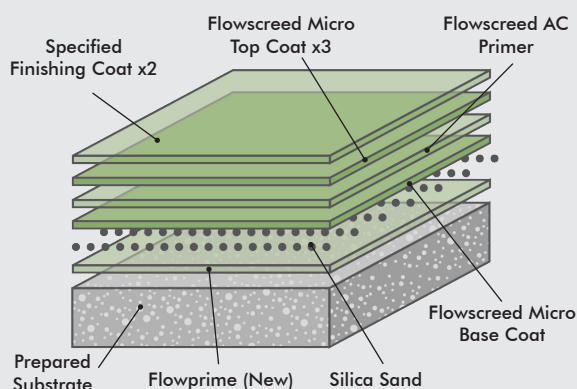
Preparatory work and application in accordance with manufacturer's instructions.

## Products Included In This System

Primer	Flowprime (New)
Sand Scatter	Silica Sand
Base Coat	Flowscreed Micro Base Coat
Sealer Coat	Flowscreed AC Primer
Top Coat	Flowscreed Micro Top Coat
Finishing Coat	Specified Finishing Coat*

\*Vary dependant on the environmental condition. Please consult Technical Department for more details.

Detailed application instructions are available upon request.



## Substrate Requirements

Concrete or screed substrate should be a minimum of 25N/mm<sup>2</sup>, free from laitance, dust and other contamination. The substrate should be dry up to 75% RH as per BS8204 and free from rising damp and ground water pressure. If no damp proof membrane is present, Hydraseal DPM can be incorporated directly beneath the Flowscreed Industrial Top system, enabling the immediate installation of floor finishes once the screed has dried.

## Installation Service

The installation should be carried out by a licensed contractor with a documented quality assurance scheme. For details of our licensed contractors, contact our customer service team or enquire via our website at [www.flowcreteasia.com](http://www.flowcreteasia.com)

## Environmental Considerations

The finished system is assessed as non-hazardous to health and the environment. The long service life and seamless surface reduce the need for repairs, maintenance and cleaning. Environmental and health considerations are controlled during manufacture and application of the products by Flowcrete staff and fully trained and experienced contractors.

## Aftercare, Cleaning & Maintenance

Clean regularly using a single or double headed rotary scrubber drier in conjunction with a mildly alkaline detergent.

## Protection on Completion

Ensure the screed is not subject to draughts during the first 6 hours of curing as this may lead to cracking and crazing. Tape up doorways with polythene to prevent air movement. Prevent contamination by following trades.

## Important Note

Flowcrete products are guaranteed against defective materials and manufacture and are sold subject to our standard 'Warranty, Terms and Conditions of Sale', copies of which can be obtained on request. Warranty does not cover suitability, fit for purpose or any consequential or related damages.

## Further Information

To ensure you are specifying a fit-for-purpose floor, please consult our Technical Advisors or visit our website to register your interest in specifying one of the most durable floors on the market.

1. Light colours may require additional coats to achieve desired results 2. It is recommended that top coat colours are close to base coats colours to achieve desired results  
3. This product is not UV stable and may discolour unless otherwise stated 4. System Data Sheet to be read in conjunction with Method Statement and Product data Sheets.