

Flowshield Quartz Lite (1mm)

A durable, decorative, self-smoothing epoxy floor with attractive speckled quartz, tailored for a broad range of environments.

A tough, easy-to-clean alternative to vinyl for various spaces.



Good Chemical Resistance:

Protects against sanitizing agents used in pharmaceutical and hospital environments.



Decorative Finish:

A seamless floor finish with a speckled design, available in a wide range of colours.



Hard-Wearing:

Hard-wearing & abrasion resistant suitable for medium to heavy traffic.



Solvent Free:

Solvent free, low in VOCs and environmentally friendly.



Seamless & Hygienic:

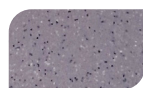
Non-porous and joint-free surface prevents bacteria and dirt buildup.



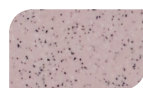
Pearl White



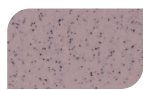
Silver Grey



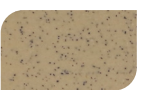
Iron Grey



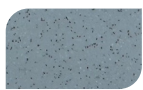
Clay Beige



Vintage Beige



Sunny Yellow



Misty blue



Hunter Green

The applied colours may differ from the examples shown.
For a full colour chart and samples, contact your local Flowcrete office.



Technical Profile*

SLIP RESISTANCE**

Method described in BS 7976-2 (typical values for 4-S rubber slider)

Dry > 40, Wet depends on specification (in accordance with HSE and UKSRG guidelines)

THERMAL RESISTANCE

Tolerant up to 60°C

WATER PERMEABILITY

Nil – Karsten test (impermeable)

SHORE D HARDNESS

ASTM D2240

> 70

CHEMICAL RESISTANCE

Contact technical department

ABRASION RESISTANCE

Taber Abrader (1 kg load using CS17 wheels)

90 mg loss per 1000 cycles

COMPRESSIVE STRENGTH

BS 6319

> 55 N/mm²

FLEXURAL STRENGTH

BS 6319

> 20 N/mm²

TENSILE STRENGTH

BS 6319

> 10 N/mm²

BOND STRENGTH

Greater than cohesive strength of 25 N/mm² concrete. > 1.5 MPa

TOXICITY

Taint free to sensitive foodstuffs

SPEED OF CURE

10 °C

20 °C

30 °C

Light Traffic

36 h

28 h

24 h

Full Traffic

72 h

48 h

36 h

Full Chemical Cure

12 d

7 d

6 d

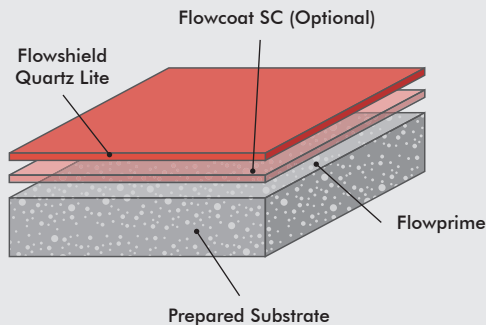
* These figures are typical properties achieved in laboratory tests at 20°C and at 50% Relative Humidity. **The slipperiness of flooring materials can change significantly, due to the installation process, after short periods of use, due to inappropriate maintenance, longer-term wear and/or surface contaminants (wet or dry). Textured systems are recommended to meet slip resistance value requirements for wet conditions and/or surface contaminants (wet or dry) - please contact our Technical Advisors for further details and specifications.

Model Specification

System	Flowshield Quartz Lite
Thickness	Minimum 1mm
Manufacturer	Tremco CPG Malaysia

Preparatory work and application in accordance with manufacturer's instructions.

System Design



Products Included In This System

Primer	Flowprime
Finishing Coat	Flowshield Quartz Lite

Detailed application instructions are available upon request.

Substrate Requirements

Concrete or screed substrate should be a minimum of 25N/mm², free from laitance, dust and other contamination. The substrate should be dry up to 75% RH as per BS8204 and free from rising damp and ground water pressure. To produce the required aesthetic effect, a smooth, level substrate is required. Contact Flowcrete for more advice.

Installation Service

The installation should be carried out by a licensed contractor with a documented quality assurance scheme. For details of our licensed contractors, contact our customer service team or enquire via our website at www.flowcreteasia.com

Aftercare, Cleaning & Maintenance

Clean regularly using a single or double headed rotary scrubber drier in conjunction with a mildly alkaline detergent.

Environmental Considerations

The finished system is assessed as non-hazardous to health and the environment. The long service life and seamless surface reduce the need for repairs, maintenance and cleaning. Environmental and health considerations are controlled during manufacture and application of the products by Flowcrete staff and fully trained and experienced contractors.

Important Note

Flowcrete products are guaranteed against defective materials and manufacture and are sold subject to our standard 'Warranty, Terms and Conditions of Sale', copies of which can be obtained on request. Warranty does not cover suitability, fit for purpose or any consequential or related damages.

Further Information

To ensure you are specifying a fit-for-purpose floor, please consult our Technical Advisors or visit our website to register your interest in specifying one of the most durable floors on the market.

1. Light colours may require additional coats to achieve desired results 2. It is recommended that top coat colours are close to base coats colours to achieve desired results
3. This product is not UV stable and may discolour unless otherwise stated 4. System Data Sheet to be read in conjunction with Method Statement and Product data Sheets.