

## Flowfresh RT (6 - 9 mm)

A heavy-duty, hygienic PU screed providing a highly durable, lightly textured finish with excellent chemical and temperature resistance.

Provides a hygienic floor finish for heavy duty wet processing areas in F&B facilities.



### Green Building Product:

4-tick SGBC Leader-rated for excellent environmental sustainability.



### Temperature Resistant:

Resistant to extreme temperatures, from -45°C to 120°C (at 9mm).



### Slip Resistant:

Lightly textured finish provides a safe environment for workers.



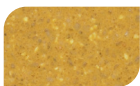
### Extremely Hard Wearing:

A hard-wearing & abrasion resistant finish to protect the substrate below.



### Hygienic:

HACCP International Certified.



Warm Buff



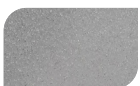
Clay



Coral Red



Shamrock Green



Ash Grey



Pewter Grey

The applied colours may differ from the examples shown. Flowfresh is not colour fast and may change colour over time (exhibits a yellowing effect). Especially the Grey may discoloured upon receiving the UV light and heat. However, this does not compromise aliphatic UV sealer is applied to achieve stable colour consistency.



## Technical Profile\*

### FIRE RESISTANCE

EN 13501-1

B<sub>g</sub> - s1

### SLIP RESISTANCE\*\*

Method described in BS 7976-2 (typical values for 4-S rubber slider)

Dry >40, Wet depends on specification (in accordance with HSE and UKSRG guidelines)

### IMPACT RESISTANCE

EN ISO 6272

20Nm

### WATER PERMEABILITY

Nil – Karsten test (impermeable)

### VAPOUR PERMEABILITY

ASTM E96:90

3g/m<sup>2</sup>/24hrs (at 9mm thick)

### TEMPERATURE RESISTANCE

From -25°C to 100°C (at 6mm)

From -45°C to 120°C (at 9mm)

### CHEMICAL RESISTANCE

Contact Technical Department

Excellent resistance to sugars and most acids (organic and inorganic)

### ABRASION RESISTANCE

Taber Abrader (1 kg load using CS17 wheels)

0.12g loss per 1000 cycles

### COMPRESSIVE STRENGTH

EN 13892-2

>50 N/mm<sup>2</sup>

### FLEXURAL STRENGTH

EN 13892-2

>20 N/mm<sup>2</sup>

### TENSILE STRENGTH

BS 6319

>10 N/mm<sup>2</sup>

### COEFFICIENT OF THERMAL EXPANSION

ASTM C531

3.74 x 10<sup>-5</sup> °C<sup>-1</sup>

### BOND STRENGTH

Greater than cohesive strength of 25 N/mm<sup>2</sup> concrete. >1.5 MPa

### SPEED OF CURE

10 °C

20 °C

30 °C

Light Traffic

36 h

24 h

12 h

Full Traffic

72 h

48 h

24 h

Full Chemical Cure

10 d

7 d

6 d

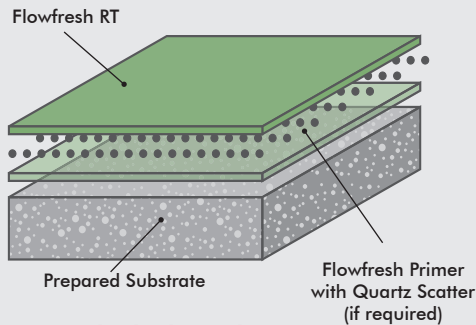
\* These figures are typical properties achieved in laboratory tests at 20°C and at 50% Relative Humidity. \*\*The slipperiness of flooring materials can change significantly, due to the installation process, after short periods of use, due to inappropriate maintenance, longer-term wear and/or surface contaminants (wet or dry). Textured systems are recommended to meet slip resistance value requirements for wet conditions and/or surface contaminants (wet or dry) - please contact our Technical Advisors for further details and specifications.

## Model Specification

<b>System</b>	Flowfresh RT
<b>Finish</b>	Matt
<b>Thickness</b>	6 - 9 mm

Preparatory work and application in accordance with manufacturer's instructions.

## System Design



## Products Included In This System

<b>Primer</b>	Flowfresh Primer with Quartz Scatter (if required)
<b>Finishing Coat</b>	Flowfresh RT

Detailed application instructions are available upon request.

## Available in Multi-Pack Supply Format

- Flowfresh Base A
- Flowfresh Hardener B
- Flowfresh Filler C
- Flowfresh RT Filler D
- Flowfresh Pigment Paste

## Substrate Requirements

Concrete/screed substrate should be a minimum of 25N/mm<sup>2</sup>, free from laitance, dust and other contamination. Substrate should be surface dry and free from rising damp and ground water pressure.

## Installation Service

The installation should be carried out by a licensed contractor with a documented quality assurance scheme. For details of our licensed contractors, contact our customer service team or enquire via our website at [www.flowcreteasia.com](http://www.flowcreteasia.com)

## Environmental Considerations

The system is assessed as non-hazardous to health & the environment. The long service life & seamless

surface reduce the need for repairs, maintenance and cleaning. Environmental and health considerations are controlled during manufacture and application of the products by Flowcrete staff and fully trained and experienced contractors.

## HACCP International Certification

Flowfresh has been evaluated to international standards and a set of key food safety criteria for potential physical, chemical and microbiological food safety risks by a team of degree qualified food technologists and product assessors. The Flowfresh range has been identified as food-safe for use in wet and dry food handling areas such as kitchens, production areas and processing areas operating a HACCP based Food Safety Program, noting the conditions of the certification statement SSZ. HACCP International operates a world renowned product certification scheme for equipment, materials and services used within the global food and beverage processing, production and packaging sector - confirming a product's suitability for use within food businesses that operate to the world's highest standards.

## Aftercare, Cleaning & Maintenance

Clean regularly using a single or double headed rotary scrubber drier in conjunction with a mildly alkaline detergent.

## Important Note

Flowcrete products are guaranteed against defective materials and manufacture and are sold subject to our standard 'Warranty, Terms and Conditions of Sale', copies of which can be obtained on request. Warranty does not cover suitability, fit for purpose or any consequential or related damages.

## Further Information

To ensure you are specifying a fit-for-purpose floor, please consult our Technical Advisors or visit our website to register your interest in specifying one of the most durable floors on the market.

1. Light colours may require additional coats to achieve desired results 2. It is recommended that top coat colours are close to base coats colours to achieve desired results  
3. This product is not UV stable and may discolour unless otherwise stated 4. System Data Sheet to be read in conjunction with Method Statement and Product data Sheets.