

Flowcrete

for the world at your feet



COMMERCIAL FLOORING

- ▶ Combine colour, performance and design to deliver a durable floor finish in commercial venues and retail environments.

www.flowcreteasia.com

Commercial Flooring Technical Profile



Flowcrete's Commercial Flooring range has been developed to deliver the ultimate in aesthetic appeal, without compromising on performance.

Manufactured in our ISO 9001 certified plant in Malaysia, our seamless resin flooring solutions provide an appealing surface underfoot through its wide range of attractive smooth, flaked and stone finishes.

Durable formulations take heavy footfall and exposure to detergents and corrosive agents in their stride, ideally suited to busy public venues that might be subject to spillages and daily cleaning regimes. Added benefits of impressive slip resistance, noise reduction and versatility result in a range of flooring solutions ideally suited to a variety of commercial environments.



Application Suitability



Retail



Railways & Airports



Stadia



Education & Offices



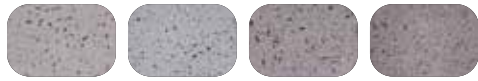
Leisure



Healthcare

COLOUR CHART STANDARD COLOURS

Mondéco Dune



Sand Beige Storm Grey Quartz Grey Mystic Grey



Antique Pink Pretty Pink Vintage Yellow Burn Orange

Mondéco Mars

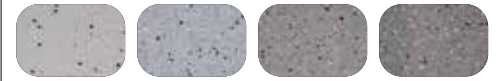


Sand Beige Storm Grey Quartz Grey Mystic Grey

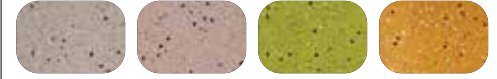


Antique Pink Pretty Pink Vintage Yellow Burn Orange

Mondéco Luna

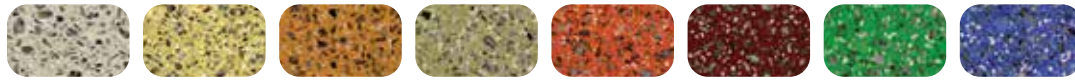


Sand Beige Storm Grey Quartz Grey Mystic Grey



Antique Pink Pretty Pink Vintage Yellow Burn Orange

Mondéco Earth



Coconut Almond Peach Pomegranate Tangerine Chilli Pepper Kiwi Blueberry

Urban Expressions EP



Slate Grey Dusty Grey Old Gold

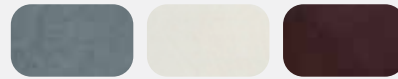


Morning Coffee Smokey Grey Midnight Green

Metallic Expressions EP



Azure Caribbean Coral



Dolphin Pearl Ruby

Flowflake Terroso



Black Granite Glacier Seashell Frosty Grey Granite Moonlite Oyster Storm

Flowflake Kristalina



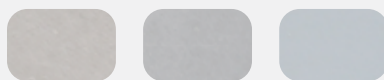
Dalmation Azure Blue Cranberry Emerald Granite Ebony Clementine Gold Pacific Blue Peacock

Flowflake Marble



Onyx Carbon Pewter Basalt Limestone Sandstone

Flowscreed Micro



Pewter Luna Cemento



Antique Grey Cinnamon Latte

Rustik / Rustik UV



White Sapphire Smokey Quartz



Grey Moonstone Black Sapphire

Peran SL



Tomato Kiwi Tangerine Grapefruit



Blueberry Spearmint Pear Plum

**The applied colours may differ slightly from the examples shown above. Contact our customer services for a true colour sample or a special colour match.

Mondéco

A highly decorative, solvent free, epoxy resin terrazzo floor finish which incorporates granite, marble or flint aggregates.

Suitable for public areas where high end aesthetics and durability are of key concern.



A decorative, speckled floor finish that is available in a range of colours.



Colours & patterns can be tailored to meet the clients design requirements.



Hard-wearing & abrasion resistant suitable for medium to heavy traffic.



Solvent free, low in VOCs and incorporates recycled content.



The seamless finish allows the system to be cleaned easily.

Technical Profile

FIRE RESISTANCE

EN 13501-1

B_{f1}-s1

SLIP RESISTANCE

BS 7976-2
(typical values for 4-S
rubber slider)

Dry >40, Wet depends
on specification (in
accordance with HSE
and UKSRG guidelines)

TEMPERATURE RESISTANCE

Tolerant of sustained temperatures up to 60°C

WATER PERMEABILITY

Karsten Test

Nil (Impermeable)

ABRASION RESISTANCE

BS8204-2

Class AR2 (Medium duty
industrial and commercial)

BOND STRENGTH

>1.5 MPa*

FLEXURAL STRENGTH

EN 13892-2

>20 N/mm²

*Assumes concrete compressive strength is greater than 25N/mm²

For a full Technical Profile, contact your local Technical Department.



Mondéco Earth (6mm)

A highly decorative, seamless epoxy terrazzo flooring system incorporating granite and flint aggregates within the formulation.

Boasting impressive durability, the terrazzo system can deliver extended life cycles when compared with other flooring materials.



Aesthetically pleasing



Unique, bespoke designs



Highly durable for extended lifecycles



Solvent free, low odour

Technical Profile

FIRE RESISTANCE

EN 13501-1

B_{fl} - s1

SLIP RESISTANCE

BS 7976-2
(typical values for 4-S
rubber slider)

Dry >40, Wet depends
on specification (in
accordance with HSE
and UKSRG guidelines)

TEMPERATURE RESISTANCE

Tolerant of sustained temperatures up to 60°C

WATER PERMEABILITY

Karsten Test

Nil (Impermeable)

ABRASION RESISTANCE

Taber Abrader (1 kg load
using CS17 wheels)

50 mg loss per 1000 cycles

BOND STRENGTH

> 1.5 MPa*

FLEXURAL STRENGTH

EN 13892-2

>20 N/mm²

*Assumes concrete compressive strength is greater than 25 N/mm²

For a full Technical Profile, contact your local Technical Department.



Urban Expressions EP

(Thickness dependent on specification)

A smooth and understated synthetic epoxy floor finish providing a multi-dimensional colour across the floor surface.

The artistic finish is suitable for high-end commercial environments looking for a wow-factor underfoot.



Multi-dimensional, smooth, satin floor finish



Versatile design potential



Hard-wearing & abrasion resistant



Hygienic, easy to clean

Technical Profile

FIRE RESISTANCE	
EN 13501-1	B _{fi} -s1
SLIP RESISTANCE	
Method described in BS 7976-2 (typical values for 4-S rubber slider)	Dry >40, Wet depends on specification (in accordance with HSE and UKSRG guidelines)
TEMPERATURE RESISTANCE	
Tolerant up to 60°C	
WATER PERMEABILITY	
Nil – Karsten test (impermeable)	
CHEMICAL RESISTANCE	
Contact Technical Department	
ABRASION RESISTANCE	
Taber Abrader (1 kg load using CS17 wheels)	90 mg loss per 1000 cycles
BOND STRENGTH	
> 1.5 MPa*	

*Assumes concrete compressive strength is greater than 25 N/mm²

For a full Technical Profile, contact your local Technical Department.



Metallic Expressions EP

(Thickness dependent on specification)

A hard wearing, metallic epoxy floor finish that provides a highly decorative finish for a wide range of modern commercial settings.

Specialist application techniques used to create a molten metal effect across the seamless floor.



Highly decorative, metallic effect floor finish



Versatile design potential



Exceptional wear resistance



Seamless, easy to clean finish

Technical Profile

SLIP RESISTANCE

BS 7976-2
(typical values for 4-S
rubber slider)

Dry >40, Wet depends
on specification (in
accordance with HSE
and UKSRG guidelines)

THERMAL RESISTANCE

Tolerant up to 60°C

WATER PERMEABILITY

Nil - Karsten test (impermeable)

CHEMICAL RESISTANCE

Contact Technical Department

ABRASION RESISTANCE

Taber Abrader (1 kg load
using CS17 wheels)

90 mg loss per 1000 cycles

BOND STRENGTH

>1.5 MPa*

*Assumes concrete compressive strength is greater than 25 N/mm²

For a full Technical Profile, contact your local Technical Department.



Flowflake Terroso

(Thickness dependent on specification)

An attractive, flaked epoxy resin finish comprising of a flake scatter in a pigmented resin before being sealed with a clear, resistant topcoat.

Ideally suited to commercial environments, the attractive system delivers a resistant, easy to clean finish.



Extensive design potential



Seamless, easy to clean finish



Resists abrasion and chemical attack

Technical Profile

FIRE RESISTANCE	
EN 13501-1	B _i -s1
SLIP RESISTANCE	
BS 7976-2 (typical values for 4-S rubber slider)	Dry >40, Wet depends on specification (in accordance with HSE and UKSRG guidelines)
TEMPERATURE RESISTANCE	
Tolerant of sustained temperatures up to 60°C	
WATER PERMEABILITY	
Karsten Test	Nil (Impermeable)
ABRASION RESISTANCE	
BS8204-2	Class AR2 (Medium duty industrial and commercial)
BOND STRENGTH	
> 1.5 MPa*	
FLEXURAL STRENGTH	
BS6319	15 N/mm ²

*Assumes concrete compressive strength is greater than 25 N/mm²

For a full Technical Profile, contact your local Technical Department.



Flowflake Kristalina

A decorative, smooth, sparkling epoxy resin floor finish ideal for modern and contemporary environments.

Ideal for use in commercial settings such as showrooms, designer outlets and nightclubs.



Attractive & decorative



Hard-wearing & abrasion resistant



Easy to clean



Minimises visible scratches

Technical Profile

FIRE RESISTANCE

EN 13501-1

B_{fl} - s1

SLIP RESISTANCE

Method described in BS 7976-2 (typical values for 4-S rubber slider)

Dry > 40, Wet depends on specification (in accordance with HSE and UKSRG guidelines)

THERMAL RESISTANCE

Tolerant of sustained temperatures up to 60°C

WATER PERMEABILITY

Nil – Karsten test (impermeable)

ABRASION RESISTANCE

BS8204:Part 2:2002

Class AR2 - Medium duty industrial and commercial

BOND STRENGTH

Greater than cohesive strength of 25 N/mm² concrete. > 1.5 MPa

IMPACT RESISTANCE

ISO 6272

1 kg weight > 1.8 m
2 kg weight > 1.5 m

*Assumes concrete compressive strength is greater than 25 N/mm²



Flowflake Marble

(Thickness dependent on specification)

A highly decorative coating combining luxury aesthetics with superior performance benefits.

The system contains a flake scatter over a pigmented epoxy base coat, followed by a top coat of clear, tough sealer.



Extensive design potential



Seamless, easy to clean finish



Resists chemicals and cleaning agents



Wear and scratch resistant

Technical Profile

FIRE RESISTANCE

EN 13501-1

B_i-s1

SLIP RESISTANCE

BS 7976-2
(typical values for 4-S
rubber slider)

Dry >40, Wet depends
on specification (in
accordance with HSE
and UKSRG guidelines)

TEMPERATURE RESISTANCE

Tolerant of sustained temperatures up to 60°C

WATER PERMEABILITY

Karsten Test

Nil (Impermeable)

ABRASION RESISTANCE

BS8204-2

Class AR2 (Medium duty
industrial and commercial)

BOND STRENGTH

> 1.5 MPa*

FLEXURAL STRENGTH

BS6319

15 N/mm²

*Assumes concrete compressive strength is greater than 25 N/mm²

For a full Technical Profile, contact your local Technical Department.



Flowscreed Micro

A two-component, hard wearing, pigmented micro-cement system that provides a natural concrete floor aesthetic.

Ideal for use in resorts, hotels, showrooms, restaurants, cafes, lounges, museums, art galleries, offices, and residential spaces.



Attractive, colourful finish



Trowel applied, seamless finish



Hard wearing and durable



Seamless, easy to clean finish

Technical Profile

SLIP RESISTANCE**

Method described in BS 7976-2 (typical values for 4-S rubber slider)

Dry > 40,
Wet > 36, low slip potential

ABRASION RESISTANCE

Taber Abrader
(1 kg load using CS10 wheels)

<50mg loss per 1000 cycles

BOND STRENGTH

Greater than cohesive strength of 25 N/mm² concrete. >1.5 MPa

**The slipperiness of flooring materials can change significantly, due to the installation process, after short periods of use, due to inappropriate maintenance, longer-term wear and/or surface contaminants (wet or dry). Textured systems are recommended to meet slip resistance value requirements for wet conditions and/or surface contaminants (wet or dry) - please contact our Technical Advisors for further details and specifications.

For a full Technical Profile, contact your local Technical Department.



Rustik / Rustik UV (6mm)

An attractive, slip-resistant floor finish comprising natural stones encapsulated in a clear resin binder.

The attractive, unique system is available in both indoor and UV-stable outdoor formulations to deliver highly decorative floor finish throughout the commercial environment.



Attractive, natural stone finish



Rapid installation



Resists abrasion and chemical attack



UV stable formulation available

Technical Profile

FIRE RESISTANCE

SITAC

Class G (Certificate no. 1727/75)

SLIP RESISTANCE

BS 7976-2
(typical values for 4-S rubber slider)

Dry >40, Wet depends on specification (in accordance with HSE and UKSRG guidelines)

TEMPERATURE RESISTANCE

RUSTIK

Tolerant of sustained temperatures up to 60°C

RUSTIK UV

Tolerant of sustained temperatures up to 65°C

ABRASION RESISTANCE (RUSTIK)

BS8204-2

Class AR2 (Medium duty industrial and commercial)

BOND STRENGTH

> 1.5 MPa*

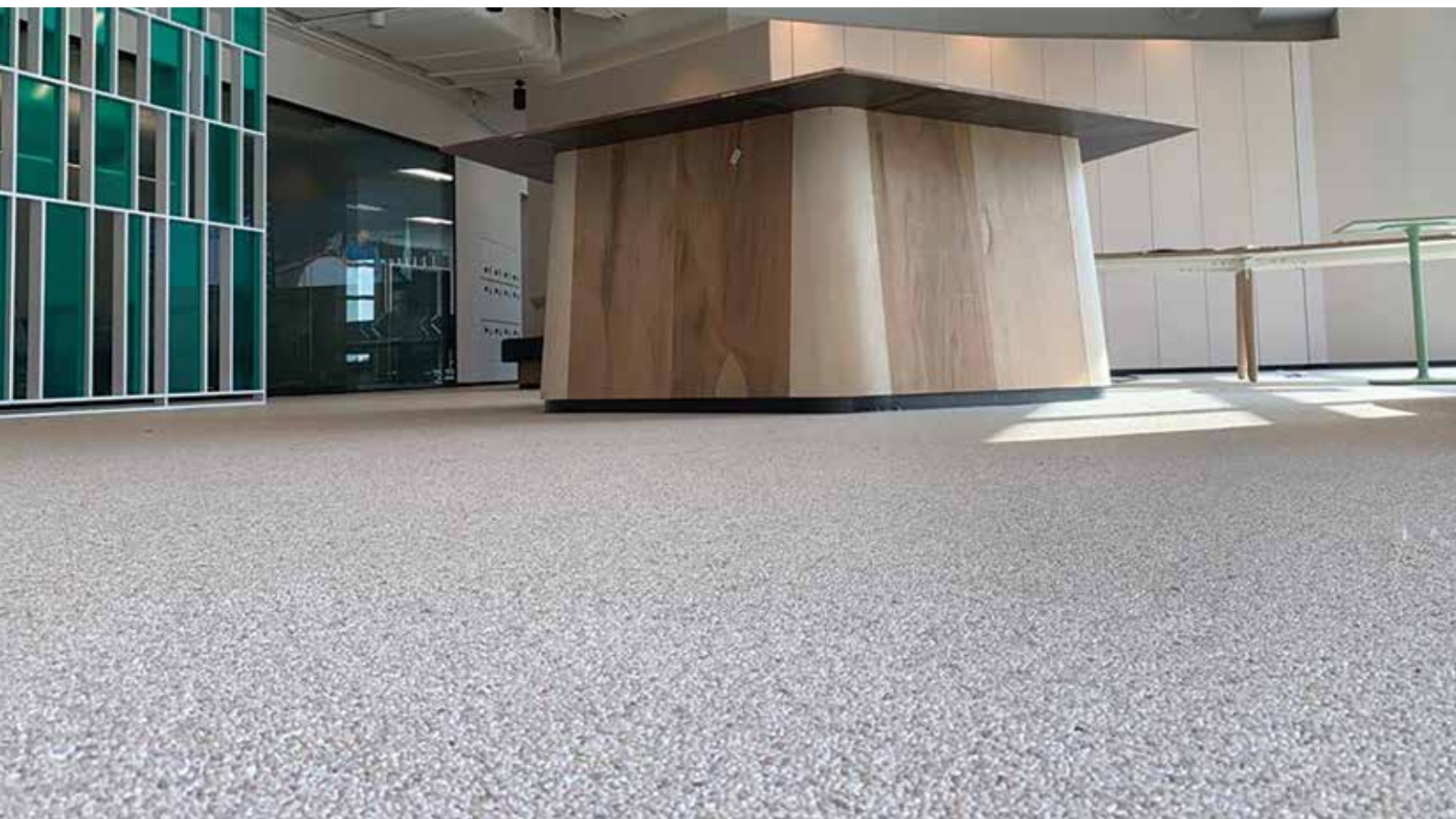
COMPRESSIVE STRENGTH

BS6319

>30 N/mm²

*Assumes concrete compressive strength is greater than 25 N/mm²

For a full Technical Profile, contact your local Technical Department.



Peran SL (2mm)

A colourful, glossy, self-smoothing resin floor coating system ideal for a contemporary minimalist interior design scheme.

The hard wearing finish of this attractive system resists degradation from sustained traffic and chemical attack.



Attractive, colourful finish



Seamless, easy to clean finish



Hard wearing and durable



Resists chemicals and cleaning agents

Technical Profile

FIRE RESISTANCE

EN 13501-1

B_i-s1

SLIP RESISTANCE

BS 7976-2
(typical values for 4-S
rubber slider)

Dry >40, Wet depends
on specification (in
accordance with HSE
and UKSRG guidelines)

TEMPERATURE RESISTANCE

Tolerant of sustained temperatures up to 50 °C

WATER PERMEABILITY

Karsten Test

Nil (Impermeable)

ABRASION RESISTANCE

BS8204-2

Class AR2 (Medium duty
industrial and commercial)

BOND STRENGTH

> 1.5 MPa*

FLEXURAL STRENGTH

EN 13892-2

35 N/mm²

*Assumes concrete compressive strength is greater than 25 N/mm²

For a full Technical Profile, contact your local Technical Department.







Flowcrete

for the world at your feet

Australia | China | Hong Kong | Indonesia | Japan | Macao | Malaysia | New Zealand
Philippines | Singapore | South Korea | Taiwan | Thailand | Vietnam



www.flowcreteasia.com



asia@flowcrete.com



Contact Us

*Whilst every care has been taken to ensure that the information included in this document was accurate at the time of printing, the publisher of this document reserves the right to change product specifications at any time without prior notice. The photographs and colours reproduced in this publication are within the constraints of the printing process and are not to be used for matching purposes. All photographs are used for approximate representation only and may not show the actual products on offer. E&OE.