

## Flowscreed Industrial Top

A single component, quick drying, cementitious levelling screed to be used in areas where a smooth surface is required.

Can be laid at a thickness of up to 20mm, and a minimum of 7mm (pumped) or 4mm (hand).



### Self Smoothing:

Will self smooth (when applied above 7mm) to level out uneven surfaces.



### Versatile Application:

Can be applied by hand or pumped on site dependent on project requirements.



### Single Pack:

Supplied in single pack format reducing the need for excessive packaging.



### Durable:

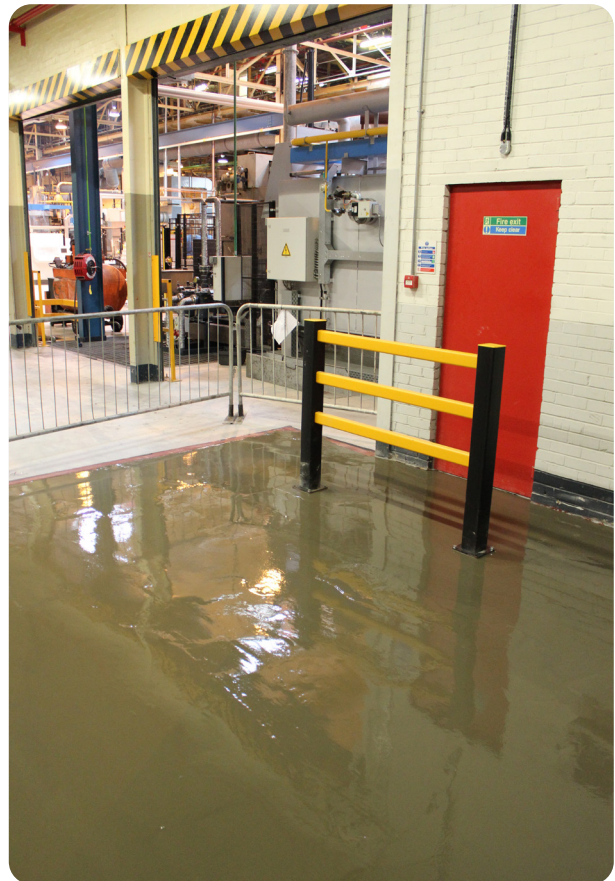
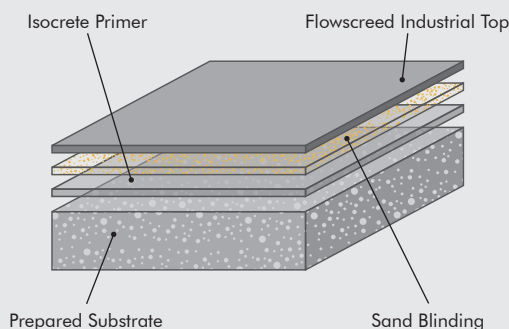
Provides a strong and durable screed ready to receive a variety of finishes.



### Rapid Drying:

Can walk on after 2 - 4 hours under normal conditions.

### System Design



### Technical Profile\*

#### COMPRESSIVE STRENGTH (28 DAYS)

35 N/mm<sup>2</sup>

#### ADHESION (28 DAYS)

> 1 N/mm<sup>2</sup>

#### PROTEIN CONTENT

Nil

#### RECOMMENDED THICKNESS

4 - 20mm by hand  
7 - 20mm by pump

#### LAYING TEMPERATURE

6 - 35°C

#### WORKING TIME

20 mins at 20°C

#### WALK ON TIME

2 - 4 hours at 20°C

#### OVERCOATING TIME (20°C, 50% RH)

10mm thick

1 day (dependant upon thickness, ambient conditions & substrate condition)

#### FLOW RING

65mm diameter x 40mm high

230 - 250mm

\* These figures are typical properties achieved in laboratory tests at 20°C and at 50% Relative Humidity.

## Model Specification

<b>System</b>	Flowscreed Industrial Top
<b>Thickness</b>	4 - 20mm
<b>Manufacturer</b>	Flowcrete Asia

Preparatory work and application in accordance with manufacturer's instructions.

## Products Included In This System

I) For high impact areas:

**Primer:** Flowprime @ 0.25 kg/m<sup>2</sup> with full blind of dry Silica Sand/Quartz grade 0.7-1.2mm @ 2 kg/m<sup>2</sup>

(II) If a dpm is required and on a concrete base with moisture content above 75%:

**DPM:** Hydraseal DPM @ 0.5 kg/m<sup>2</sup> with full blind of dry Silica Sand/Quartz grade 0.7-1.2mm @ 2 kg/m<sup>2</sup>

(III) In areas of light pedestrian traffic and whenever overlaying Isocrete Self Level Base:

**Primer:** Isocrete Primer @ 0.1 kg/m<sup>2</sup>

**Topping:** Flowscreed Industrial Top @ 17 kg/m<sup>2</sup> for 10mm (1.70kg/m<sup>2</sup> per mm thickness)

**Resin Topping (if required):** See relevant Flowcrete data sheets

Detailed application instructions are available upon request.

## Substrate Requirements

Concrete or screed substrate should be a minimum of 25N/mm<sup>2</sup>, free from laitance, dust and other contamination. The substrate should be dry up to 75% RH as per BS8204 and free from rising damp and ground water pressure. If no damp proof membrane is present, Hydraseal DPM can be incorporated directly beneath the Flowscreed Industrial Top system, enabling the immediate installation of floor finishes once the screed has dried.

## Hardening & Drying Times

The Flowscreed Industrial Top may be walked on after 2 to 4 hours, and maybe sanded if required 24 hours after application.

Where a floor finish is to be installed, it may be installed after 24 to 48 hours, depending on the type of finish, thickness of Flowscreed Industrial Top, substrate and ambient conditions.

## Protection on Completion

Ensure the screed is not subject to draughts during the first 6 hours of curing as this may lead to cracking and crazing. Tape up doorways with polythene to prevent air movement. Prevent contamination by following trades.

## Installation Service

The installation should be carried out by a licensed contractor with a documented quality assurance scheme. For details of our licensed contractors, contact our customer service team or enquire via our website at [www.flowcreteasia.com](http://www.flowcreteasia.com)

## Environmental Considerations

The finished system is assessed as non-hazardous to health and the environment. The long service life and seamless surface reduce the need for repairs, maintenance and cleaning. Environmental and health considerations are controlled during manufacture and application of the products by Flowcrete staff and fully trained and experienced contractors.

## Important Note

Flowcrete products are guaranteed against defective materials and manufacture and are sold subject to our standard 'Warranty, Terms and Conditions of Sale', copies of which can be obtained on request. Warranty does not cover suitability, fit for purpose or any consequential or related damages.

## Further Information

To ensure you are specifying a fit-for-purpose floor, please consult our Technical Advisors or visit our website to register your interest in specifying one of the most durable floors on the market.

1. Light colours may require additional coats to achieve desired results 2. It is recommended that top coat colours are close to base coats colours to achieve desired results  
3. This product is not UV stable and may discolour unless otherwise stated 4. System Data Sheet to be read in conjunction with Method Statement and Product data Sheets.