

Mondéco Earth (6 mm)

A highly decorative, solvent free, epoxy resin terrazzo floor finish which incorporates granite and flint aggregates.

Suitable for public areas where high end aesthetics and durability are of key concern.



Attractive:

A decorative, speckled floor finish that is available in a range of colours.



Design Flexibility:

Colours & patterns can be tailored to meet the clients design requirements.



Very Hard-Wearing:

Hard-wearing & abrasion resistant suitable for medium to heavy traffic.



Solvent Free:

Solvent free, low in VOCs and environmentally friendly.



Hygienic & Easy to Clean:

The seamless finish allows the system to be cleaned easily.



Coconut



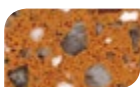
Almond



Peach



Pomegranate



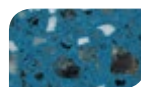
Tangerine



Chilli Pepper



Kiwi



Blueberry

The applied colours may differ from the examples shown.
For a full colour chart and samples, contact your local Flowcrete office.



Technical Profile*

FIRE RESISTANCE				
EN 13501-1	B _{fl} - s1			
SLIP RESISTANCE**				
Method described in BS 7976-2 (typical values for 4-S rubber slider)	Dry >40, Wet depends on specification (in accordance with HSE and UKSRG guidelines)			
THERMAL RESISTANCE				
Tolerant up to 60°C				
WATER PERMEABILITY				
Nil – Karsten test (impermeable)				
CHEMICAL RESISTANCE				
Contact technical department				
IMPACT RESISTANCE				
BS8204 Part 1 Cat:A	<0.5mm			
ABRASION RESISTANCE				
Taber Abrader (1kg load using CS17 wheels)	50mg loss per 1000 cycles			
COMPRESSIVE STRENGTH				
EN 13892-2	>55 N/mm ²			
FLEXURAL STRENGTH				
EN 13892-2	>20 N/mm ²			
TENSILE STRENGTH				
BS 6319	>10 N/mm ²			
BOND STRENGTH				
Greater than cohesive strength of 25 N/mm ² concrete. >1.5 MPa				
TOXICITY				
Taint free to sensitive foodstuffs				
SPEED OF CURE		10 °C	20 °C	30 °C
Light Traffic		24 h	20 h	16 h
Full Traffic		72 h	48 h	36 h
Full Chemical Cure		12 d	7 d	6 d

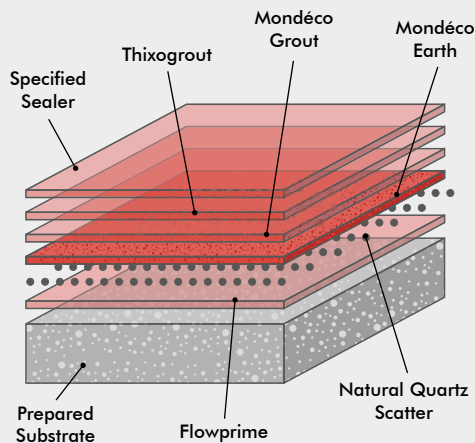
* These figures are typical properties achieved in laboratory tests at 20°C and at 50% Relative Humidity. **The slipperiness of flooring materials can change significantly, due to the installation process, after short periods of use, due to inappropriate maintenance, longer-term wear and/or surface contaminants (wet or dry). Textured systems are recommended to meet slip resistance value requirements for wet conditions and/or surface contaminants (wet or dry) - please contact our Technical Advisors for further details and specifications.

Model Specification

System	Mondéco Earth
Finish	Gloss
Thickness	6 mm
Manufacturer	Flowcrete Asia

Preparatory work and application in accordance with manufacturer's instructions.

System Design



Products Included In This System

Primer	Flowprime
Sand Scatter	Natural Quartz 8/16 Mesh Scatter
Body Coat	Mondéco Earth (Applied at 8mm, ground down to 6mm)
Grout	Mondéco Grout
2nd Grout	ThixogROUT
Finishing Coat	Mondéco Sealer (commercial) or Flowseal UV Clear (industrial)

Detailed application instructions are available upon request.

Substrate Requirements

Concrete or screed substrate should be a minimum of 25 N/mm², free from laitance, dust and other contamination. Substrate should be dry up to 75% RH as per BS8204 and free from rising damp and ground water pressure. The level tolerance of the substrate should be to SR1.

Installation Service

The installation should be carried out by a licensed contractor with a documented quality assurance scheme. For details of our licensed contractors, contact our customer service team or enquire via our website at www.flowcreteasia.com

Aftercare, Cleaning & Maintenance

Clean regularly using a single or double headed rotary scrubber drier in conjunction with a mildly alkaline detergent.

Environmental Considerations

The finished system is assessed as non-hazardous to health and the environment. The long service life and seamless surface reduce the need for repairs, maintenance and cleaning. Environmental and health considerations are controlled during manufacture and application of the products by Flowcrete staff and fully trained and experienced contractors.

Important Note

Flowcrete products are guaranteed against defective materials and manufacture and are sold subject to our standard 'Warranty, Terms and Conditions of Sale', copies of which can be obtained on request. Warranty does not cover suitability, fit for purpose or any consequential or related damages.

Further Information

To ensure you are specifying a fit-for-purpose floor, please consult our Technical Advisors or visit our website to register your interest in specifying one of the most durable floors on the market.

1. Light colours may require additional coats to achieve desired results 2. It is recommended that top coat colours are close to base coats colours to achieve desired results
3. This product is not UV stable and may discolour unless otherwise stated 4. System Data Sheet to be read in conjunction with Method Statement and Product data Sheets.